

Beth-Elements

The Bulletin of Beth-El Congregation - A Reform Synagogue Serving Tarrant County

April 2026



The Fantastic Film Fundraiser

Sunday, April 26, 10 a.m.

RSVP by April 15

See your invitation on page 8!



Brian Zimmerman, Rabbi

Divrei Torah

Build our Temple and fill it with voices.

..... Rabbi Brian Zimmerman

April 1 is the start of Passover, our foundational Jewish story

of the journey from Egyptian slavery to freedom in our own special land. But, before we could build a home, we had to wander in the desert. During those wanderings we learned of the instructions to build a sacred and permanent home where the community could gather and pray.

“Build me a holy place and I will dwell among you.” Exodus 25:8

Just a few months ago, we marked the 25th anniversary of

our new Temple – a physical place that was built to inspire awe. But the divine can only dwell where human voices make heard their innermost prayers.

On Friday, April 10, we mark 25 years of

dedication from John Sauvey, our Music Director. Yes, you heard that correctly. It has been 25 years! In April 2001, only a few months after carrying our scrolls from our Broadway sanctuary to their new home on Briarhaven Road, we hired a young opera singer who would become a member of the choir and serve as our cantorial soloist for several years of High Holy Days. John continues to bring us the

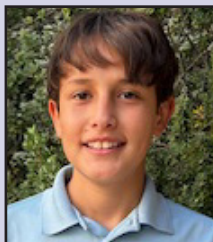
beautiful music of life as our music and choir director. I hope you will join us before the service for a celebratory Oneg and some music of gratitude from our choir.

On Friday, April 17, our Shabbat service will be led by the

students of our Religious School. The voices of the future will fill our building with song. While our sanctuary evokes our past, these voices carry the promise

..... *continued on page 2*

Bar Mitzvah



Jacob Strausz

April 11

Son of
Kate Marshall &
Dr. Michael Strausz

Worship Services

Daily Minyan with the community

Monday-Thursday 6 p.m.

Welcoming Shabbat

Join us every Friday night at 5:30 p.m. for wine, cheese and to welcome Shabbat with friends.

Thursday, April 2

First Day of Passover, Temple closed for office business. Second Night Seder, advance reservations required.

Friday, April 3

Kabbalat Shabbat with Rabbi Zimmerman and Angie Friedman 6:15 p.m.

Wednesday, April 8

Last day of Passover and Yizkor service 10:30 a.m.
Temple closed for office business.

Friday, April 10

Kabbalat Shabbat with Rabbi Zimmerman, John Sauvey and the Beth-El Choir 6:15 p.m.

Saturday, April 11

Shabbat morning service and Bar Mitzvah of Jacob Strausz 10:30 a.m.

Friday, April 17

Kabbalat Shabbat service led by Religious School students 6:15 p.m.

Saturday, April 18

Shabbat morning of song, study, and prayer with Angie Friedman at Rabbi Zimmerman's home 10:30 a.m.
(lunch to follow; please RSVP to the Temple office)

.....
All services in person and streamed at
[youtube.com/BethElCongregation](https://www.youtube.com/BethElCongregation).

..... *continued on page 2*



Michael Appleman

President's Message

.....Temple President Michael Appleman

It's spring break time, which Google describes as a week off from school during which students rest and often travel. Google also suggests that activities range from beach parties to outdoor adventures like hiking or visiting national parks. MTV had an entire show dedicated to providing almost continuous coverage of the beach-partiers among us, and the times I flipped past the channel I did not see much resting. I would suggest spring break is a little like Purim, which, in its own way, teaches "joy, resilience, and faith, and reversing potential disaster into celebration," according to reformjudaism.org.

Final exams are not far away. They are more like Passover, or the seder. Success is more likely with serious, perhaps orderly, or at least organized, preparation. But here, too, joy, resilience, and faith, reversing potential disaster into celebration, are taught.

Soon we will be in the summer months, when things, at least in theory, slow down for some. But for others, the days are filled with camps and activities — some structured, others not — and it is the lack of

structure, or the lack of a schedule, that has some pining for school days by early August.

There is order and chaos and orderly chaos at Beth-El. Our recent Purim Shpiel is one example. The weekend we hosted Shabbat services, a bat mitzvah, a wedding, and the Religious School's Purim Festival is another. Even our Primetimers are going a little nuts and trying out several new and different Haggadot that are now available! At this rate, dogs and cats will be living together soon.

On a more serious note, there is a lot going on at Beth-El, as should be evident from the other pages of this Bulletin and our website. The Board and our committees are hard at work, too. Perhaps most notably, the Nominations Committee met recently and will submit its decision soon; the Fundraising Committee is busy preparing for its big event April 26 (please come and support us and celebrate Rabbi Z's 10 years with us); of course, our MRJ and WRJ continue working hard; and, we hope to announce some exciting news about a couple of things soon. We just need to tidy up some details.

Come join us for some or all!

Worship Services

(continued from page 1)

Friday, April 24

Kabbalat Shabbat led by the Men of Reform Judaism with Rabbi Zimmerman and Student Cantor Sam Chamberlin..... 6:15 p.m.

Saturday, April 25

Confirmation Havdalah Ceremony 6 p.m.

Friday, May 1

Tot Shabbat with Cantor Shoshana and Friends 5:30 p.m.

Divrei Torah

(continued from page 1)

of a joyful and vibrant Jewish future. Our building is beautiful beyond words. But it is the human voices inside that make it a place where God dwells and more than just a monument.

We are blessed to have both a sacred past and a bright future. I hope you will join us on these Shabbatot to give thanks for our many Beth-El blessings.

Library Reviews

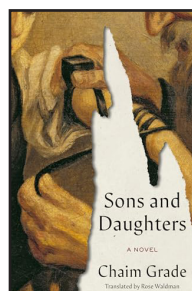
..... Margie Zentner



The Red House by Mary Morris

is a novel that blends family mystery, historical fiction, and a poignant look at inter-generational trauma, as a daughter uncovers her mother's hidden past in

Italy during World War II. Thirty years ago, Laura's mother, Viola, vanished without a trace. With her own life and marriage at a crossroads, Laura travels to Italy to solve the puzzle of her mother's disappearance and lost years.



Sons and Daughters by Chaim Grade

is hailed by some as potentially the last great Yiddish novel. While initially serialized in Yiddish newspapers, the novel depicts the rich Yiddish culture of

Poland and Lithuania that the Holocaust would eradicate. It is the clash between tradition and modernity, between a free thinking secular life and a life bound by religious duty.



The Lost Baker of Vienna by Sharon Kurtzman

follows Chana Rosenzweig, a Holocaust survivor in post-WWII, and her granddaughter Zoe Rosenzweig in 2018.

After her grandfather's death, Zoe finds clues that lead her to uncover her family's hidden past and the fate of her great aunt Chana. In 1946 Vienna, Chana struggles to survive and rebuild her life, secretly baking her late father's recipes while getting caught up in a love triangle. The novel highlights strong women as they try to carve out their own futures in a world that often limits their choices.



Shoshana Abrams Kaikov

Religious School

Education Director, Cantor Shoshana Abrams Kaikov

Each year at Passover, we gather around our tables and retell one of the most powerful stories in Jewish history: the journey from slavery to freedom. At the heart of that story is a moment that has echoed through Jewish time for thousands of years, the moment our ancestors stood at the edge of the sea, watched the waters part, and burst into song: ***Mi chamocho ba'elim Adonai?***

Who is like You, Adonai?

It is a song of awe. A song of gratitude. A song of courage.

But perhaps it is also a question meant for us.

This year in Religious School, our guiding theme has been ***Mi Chamocho: Who Is Like You?*** Throughout the year, our students have explored what it means to live with *ometz lev* (courage of the heart) and to embrace the beautiful, irreplace-

able truth that each of us is created to be uniquely ourselves.

Passover reminds us that courage does not always look like grand heroism. Sometimes courage is the quiet decision to step forward when the path ahead is uncertain. Sometimes it is the strength to stand up for what is right. And sometimes it is simply the bravery to be authentically, unapologetically you.

On **Friday, April 17**, our community will have the joy of witnessing these lessons come to life at our **Religious School Shabbat**, one of the highlights of each school year.

Our **teens will narrate the service**, bringing the story of the Exodus to life in their own voices. Our **younger students will share their personal "Mi Chamocho moments,"** reflections on times they have shown courage and kindness. Together, our students will lead us in musical prayer and teaching, infusing the evening with the spirit of the very song

that inspired our year.

Prior to the service, we will gather for a **special Shabbat dinner for Religious School families**, and I will share the sign-up link in my upcoming parent emails. Right after the service, our community will come together for a **celebratory dessert oneq**, honoring our incredible students and all they have accomplished throughout the school year.

And, as our students stand before our community singing, teaching, and leading, we will see something extraordinary.

We will see the next generation of Jewish leaders discovering their voices. We will see courage. We will see authenticity. And we will see the living answer to the question that has echoed since the sea first parted:

Mi chamocho? Who is like you?

Look around the sanctuary that night. The answer will be everywhere.

The Religious School Purim carnival was fun for students, parents, and unicorns, too!





Ruth Roper

Women of Reform Judaism

..... WRJ Co-Presidents Ruth Roper and Marilyn Stenzler

Hello, ladies! We hope you had a restful and joyous Passover! A huge thank you to Kim Factor, Marge Van Giesen, and their dedicated team for organizing Beth-El's wonderful

Second-Night Seder. Ladies, ladies, MORE WRJ events... WHAT? THERE'S MORE??

May 8 at 6:15 p.m.: WRJ Shabbat Service celebrating Mother's Day, graciously assisted by Rabbi Mecklenburger. Join us for a celebration of sisterhood and tradition.

UPDATE: With dedication and determination, Ruth Roper, Fundraising Chair of Beth-El, and other donors, in cooperation with Broadway Baptist Church, will provide weekend snack sacks through the end of the school year for DeZavala and George C. Clarke elementary schools. Every Friday, a bag of food will be placed in the students' backpacks for extra nourishment. DeZavala's campus will close at the end of the school year. Ruth and her team hope to plan for the future this summer.

Second-Night Seder.

Ladies, ladies, MORE WRJ events... WHAT? THERE'S MORE??

April 12 at 10 a.m.: Succulent gardens in the great hall at Beth-El. We'll be joined by a professional florist who will teach us how to craft beautiful succulent gardens to take home and



Marilyn Stenzler

Primetimers

..... Michelle Hartman

Thursday, April 16, noon

Chag Sameach Pesach, everyone! We have a very exciting program scheduled April 16. Dana Schultes, Executive Producer of Stage West Theatre, will be joining us. She will give us a backstage view of what goes on in the theater — from selecting plays, to auditions and casting, all the way through to the live performances! Also, you'll get a peek at the upcoming shows and find out how you can help support the local arts scene.



Dana Schultes

Lunch will be catered by Jason's Deli, or bring your own. For \$12 you get chips, a pickle, a brownie, and your choice of sandwich:

- Roasted turkey
- Roast beef
- Vegan veggie

Come for the homemade desserts and stay for this must-see program! Please RSVP to Michelle Hartman by Sunday, April 12, at hartman8729@sbcglobal.net or 817-706-3451. On with the show!



Eric Lawrence

Men of Reform Judaism

..... MRJ President Eric Lawrence

As I write this, MRJ has just completed the second of its first two cater-



MRJ at this year's Religious School Purim carnival

ing gigs in 2026. Our sincere thanks to both families for allowing MRJ to be a part of your celebration. We were also privileged to help with this year's Religious School Purim carnival. Congratulations to Shoshana on another great event.

On March 26 at Stage West, we enjoyed MRJ Theater Night. Thank you to Jerry Stein for arranging this.

Upcoming MRJ-supported events include the Religious School Shabbat on April 17 and the last day of the Religious School term May 17.

The MRJ Shabbat will be April 24. My sincere thanks to Dr. Michael Ross for taking the lead on this. And on April 26, MRJ will assist with the Beth-El Annual

Fundraiser.

The Annual Mickey Goldman Spaghetti Dinner, honoring Dick and Bob Greenman, is set for May 3. Please watch Rabbi's emails blasts to make your reservations.

In closing, a "Big Thank You" to our MRJ members who make all of this possible. Without their willingness and efforts, none of the above would be happen.



Community Minyan

Minyan with the community is a chance to say Kaddish and support your friends. Please note: there will be no Minyan during Pesach. See calendar p.7



Contributions

Feb. 10-March 9

Archives Fund

· Judith Cohen

Floral Fund

In Memory of Sidney Begelman
· Eric & Phyllis Lawrence
In Memory of Charlotte and Mickey Goldman
· Richard & Carol Minker
In Memory of Virginia Westermann
· Yuyo Westermann

Library Fund

· Judith Cohen

Music Fund

In Honor of a Speedy Recovery
for Suzie Koonsman
· Jane Oderberg
In Memory of Dr. Daniel Gestring
· Martha Brown
In Memory of Joseph Oderberg
· Jane Oderberg
In Memory of Karen Ferstenfeld
· Jane Oderberg
In Memory of Ben Barlow
· Jane Oderberg

Rabbi Mecklenburger's Discretionary Fund

In Memory of Nelson S. Neckers
· Debbi and son Julian Tyler
· Sandra Polsky and son Joseph
In Memory of Arnold Rubin
· John & Meg Rubin

Rabbi Zimmerman's Discretionary Fund

In Memory of Dr. Daniel Gestring
· Martha Brown
In Memory of Ruthe C. Handleman
· Caren Handleman & Steve Pew
In Memory of Sarah Cohn Frankel
· Margie & Jay Frankel
In Memory of Pauline Schlinger
· Margie & Jay Frankel
In Memory of Arnold Rubin
· John & Meg Rubin
In Memory of Ben Barlow
· Sheri & Richard Allen

Religious School

In Memory of John Benjamin Barlow
· M.T. Schreier

Temple Fund

For Landscaping
· Judith Cohen
In Memory of Harry Rubin
· Jack & Marilyn Rubin
In Memory of Brigitte Altman
· Billy & Rozanne Rosenthal
In Memory of Mort Meyerson
· Billy & Rozanne Rosenthal
In Memory of Jerry Harold Meyerson
· Janis Meyerson
In Memory of Max Weiner
· Bruce & Hollace Weiner
In Memory of Roslyn Gentler Gross
· Billy & Rozanne Rosenthal
In Memory of David Gross Jr.
· Billy & Rozanne Rosenthal
In Memory of Evelyn Siegel
· Sally Beyer
In Memory of Harry Maizlish
· Stephen Maizlish & Joyce Goldberg
In Memory of Virginia Abrams
· Richard Abrams

Temple Fund (continued)

In Memory of Jack Gachman
· Arnold G. & Harriette Gachman
In Memory of Eleanor Gachman
· Arnold G. & Harriette Gachman
In Memory of David Menscher
· Arnold G. & Harriette Gachman
In Memory of Marion Goodman
· Loesje Blumberg
In Memory of Rosalyn G Rosenthal
· Billy & Rozanne Rosenthal
In Memory of Ben Barlow
· Judie B. & Robert Greenman
In Memory of Brigitte Altman
· Judie B. & Robert Greenman
In Memory of Sam Weiner
· Bruce & Hollace Weiner
In Memory of Morton Wasserman
· Noreen & Bill Houston
In Memory of
Shirley Goldstein Wasserman
· Noreen & Bill Houston

Youth Fund

In Memory of
June and Howard Britton
· Jeff & Linda Hochster

Donations received after the 10th of the month will be included in the following month's bulletin.

2026 Confirmation Class: *Congratulations!*



Alexa Bregman



Ben Carlisle



Cayden Coon



Chloe Coon



Eli Simanek



Natalie Strausz



A few highlights from the Confirmation Class trip to Austin with Rabbi Zimmerman.

April - 2025 - 5786

Sunday	Monday	Tuesday	Wednesday	Thursday	Friday	Saturday
<p style="text-align: center;">Get the latest Beth-El News Sign up for Rabbi's weekly e-blasts by e-mailing: rabbiz@bethelfw.org</p>			1 EREV PESACH TEMPLE OFFICES CLOSED	2 PESACH TEMPLE OFFICES CLOSED 5:30 pm Community Second-Night Seder	3 PESACH TEMPLE OFFICES CLOSED 5:30 pm Shabbat welcome 6:15 pm Kabbalat Shabbat Service	4 PESACH 9 am Zoom Torah Study
			5 PESACH 9:30 am Religious School 9:30 am Turning Points	6 PESACH 6 pm Evening Minyan 7 pm Board Meeting	7 PESACH 6 pm Evening Minyan 12 pm Jewish Puzzle of Life	8 LAST DAY OF PESACH TEMPLE OFFICES CLOSED 10:30 am Yizkor Service
12 9:30 am Religious School 10 am WRJ Membership Appreciation	13 6 pm Evening Minyan 7 pm Community Yom HaShoah at Beth Israel	14 6 pm Evening Minyan 7 pm Kornbleet Lecture at TCU 7:30 pm Curious About Conversion	15 9:30 Archives Meeting 11 am-2 pm Gift shop open 6 pm Evening Minyan	16 12 pm PrimeTimers Event 6 pm Evening Minyan	17 5:30 pm Shabbat welcome 6:15 pm Kabbalat Shabbat Service	18 9 am Zoom Torah Study 10:30 am Shabbat Song, Study and Lunch at Zimmerman home
19 9:30 am Religious School 9:30 am Sunday Conversations 10:45 am MRJ Meeting	20 6 pm Evening Minyan 7 pm Community Yom Hazikaron at Ahavath Sholom	21 6 pm Evening Minyan	22 9:30 Archives Meeting 11 am-2 pm Gift shop open 6 pm Evening Minyan	23 6 pm Evening Minyan	24 5:30 pm Shabbat welcome 6:15 pm Kabbalat Shabbat Service	25 9 am Zoom Torah Study 6 pm Confirmation Service
26 9:30 am Religious School 11 am Temple Fundraiser 3:30 pm Community Yom Ha'Atzmaut	27 6 pm Evening Minyan	28 6 pm Evening Minyan	29 9:30 Archives Meeting 11 am-2 pm Gift shop open 6 pm Evening Minyan 7 pm Worship Commit- tee Meeting	30 6 pm Evening Minyan	May 1 5:30 pm Tot Shabbat 5:30 pm Shabbat welcome 6:15 pm Kabbalat Shabbat Service	2 9 am Zoom Torah Study

For additional information and updates about events, please visit our website at www.bethelfw.org or see Rabbi's e-blasts.

BEJY Fun

At right, the BEJY enjoyed brunch and playing games at Game Theory on South Main chaperoned by Cindy and Robert Simon.



Finding Our Place in the Jewish Puzzle of Life:

Tuesday, April 7, at noon

This twice-monthly conversation moves between recent articles, current events, philosophy, and older Jewish prayers and texts all with the goal of articulating a personal theology. Want to join us? Drop by any time or contact Rabbi Zimmerman for more information.

Commemorate, Honor, and Celebrate

..... Jewish Federation of Fort Worth and Tarrant County

Yom Ha'shoah

Holocaust Remembrance Day
April 13, 7 p.m., Beth Israel, 76034

Yom Ha'Zikaron

Israel Memorial Day
April 20, 7 p.m., Ahavath Sholom, 76109

Yom Ha'Atzmaut

Israel Independence Day
April 26, 3:30 p.m., ZIP Code 76109
Location shared upon RSVP to:
c.simon@tarrantfederation.org



Please join us for the...

KORNBLEET SCHOLAR LECTURE

ARIEL FELDMAN, Ph.D.

Rosalyn and Manny Rosenthal Professor of Jewish Studies, TCU

April 14, 2026

5:30 PM Manuscript Viewing

6:00 PM Reception

7:00 PM Lecture

TCU CAMPUS

Location shared when RSVP is received.
FREE EVENT

This year the Kornbleet Lecture will offer the attendee quite a treat. On Tuesday, April 14th the event will take place on the TCU campus with an opportunity prior to the 7 PM lecture to view ancient manuscripts (5:30 PM) and be offered a light bite to eat (6 PM).



People of the Book: Judaica Treasures

RSVP to Cindy Simon

c.simon@tarrantfederation.org

Location shared when RSVP is received.

The Kornbleet Scholar is sponsored by the Jewish Federation of Fort Worth & Tarrant County with financial support from the Dan Danciger/Fort Worth Hebrew Day School Supporting Foundation, and Kornbleet Scholar-in Residence Fund.



tarrantfederation.org



Beth-El Studios Presents...

The Fantastic Film Fundraiser

Event featuring film clips & special guest comments honoring Rabbi Zimmerman's 10th Anniversary at Beth-El

Call Sheet (Schedule)

Sunday, April 26, 2026
10:00am - 1:00pm

10:00am - 10:30am	Mix & Mingle
10:30am - 11:30am	Film Event
11:45am - 1:00pm	Casual Lunch Provided by MRJ

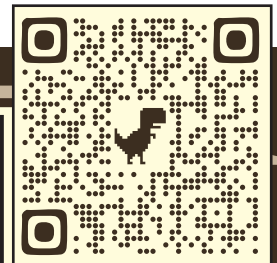
4900 Briarhaven Road, Fort Worth, TX 76109

Beth-El Annual Fundraiser

Sunday, April 26, 10 a.m.

It's *not* too late to reserve your seat for the "Fantastic Film Fundraiser" honoring Rabbi Brian Zimmerman's 10th Anniversary with Beth-El. We would love to see you there.

To make a reservation, scan the QR code below with your phone or visit: <https://bethelfw.shulcloud.com/form/2026-beth-el-fundraiser.html>



<https://bethelfw.shulcloud.com/form/2026-beth-el-fundraiser.html>

TICKETING

Tickets to event are \$36 per person (no charge for religious school students with paid parent)

Attending Lunch: _____ Donation total: \$ _____

NAME: _____

- I'll use the QR Code to register and donate
- My check payable to Beth-El is included
- Please charge me using the credit card information below

Cardholder name: _____

Billing Address & Zip Code: _____

Card Number: _____

Expiration: _____ Security Code: _____

Signature: _____

* Please return your ticket in the printed envelope by April 15th *

Production Levels

- \$10,000+: Producer
- \$5,000+: Director
- \$2,500+: Cinematographer
- \$1,000+: Costume Designer
- \$500+: Screenwriter
- \$250+: Stage Hand
- Up to \$250: Gaffer

WRJ Partners with Arborlawn UMC Community Food Pantry

Volunteer Tuesdays, 10 a.m.-noon

Donate items any time

WRJ is partnering with Arborlawn United Methodist Church to support their Community Food Pantry.

Help out by bringing a bag of nonperishable food as often as possible. You can drop the bags off on Shabbat or any day that the Temple office is open.

The most needed nonperishable items:

- canned soups
- tuna
- beans
- rice
- peanut butter
- pasta
- tomato sauce
- macaroni and cheese
- cereal
- oatmeal
- canned fruits and vegetables.

If you are interested in volunteering at

the Food Pantry, hours of operation are Tuesdays, 10 a.m.-noon.

Volunteers are warmly welcomed, and the church is thrilled to have Jewish friends from across the street volunteering!

Please be in touch with Mimi Zimmerman at mimizimmerman123@gmail.com if you'd like to volunteer.



Hollace Weiner

Then & Now: End of Exhibits is End of an Era

.....Temple Archivist, Hollace Ava Weiner

When our new building opened on Sept. 29, 2000, for the High Holy Days, Ruby Kantor, who served on the Dedication Committee, teamed up with Ellen Rubinson, who designed jewelry store windows at Northeast Mall, and Livia Levine, a soft-spoken Holocaust survivor and Sunday School teacher, to create the inaugural exhibit in the Hall of Remembrance. To find gems of Judaica, they visited Rabbi Sidney Zimelman and selected priceless objects from his antique collection.

I became part of the team because, as a master's-degree archivist, I held the keys to the vitrines — display cases protected by transparent Lucite domes.

That is how we launched a tradition of special exhibits in the Hall of Remembrance, a room envisioned as a "museum about us," according to notes I took as the synagogue took shape, and I served on three planning committees. Last month, I learned the Temple's Building Enhancement & Preservation Committee unanimously voted to end all special exhibits in the Hall of Remembrance. "This is not a museum," I was told — even if my copious notes say otherwise. After raising objections to three Beth-El board members, I realized there was no path to appeal — except to recount some of our creative collaborations from the past quarter century.

During our first months on Briarhaven Road, Rabbi Ralph Mecklenburger had a surprise visit from an evangelical preacher — a former neurosurgeon who had renounced his wealth and brought Beth-El a priceless gift: two dozen ancient clay oil lamps, some from the days

of Judah Maccabee. To showcase these fragile, terra cotta artifacts, the Archives Committee planned an exhibit. Amrita Shlachter purchased red, black, blue and brown yarn, and, standing on a ladder with the yarn and a pincushion, she created a freehand map of the Ancient World, complete with outlines of deserts, rivers, and seas. It was breathtaking.

Another exhibit highlighted Jewish War Veterans Post 755 and local Jewish soldiers in "From Gettysburg to Baghdad." It revealed that "one of the Temple's 43 founders" had fought for the North and died with a bullet lodged in his leg. Another Temple founder was a Rebel with a Confederate battle flag carved on his tombstone at Hebrew Rest. Also on display was memorabilia from WWI heroes, among them Dr. Edwin Schwarz, the city's first pediatrician. Names of the city's 226 Jewish soldiers from WWII are written in calligraphy on an honor roll scroll — a framed work later loaned to New York's Museum of Jewish Heritage for its touring exhibit, "Ours to Fight For." As an adjunct to the military exhibit, Laurie James James knew that Laurin Baum's son Scott, an Army officer, was stationed in Iraq. She asked what Scott's unit needed. Once publicized, donations poured in.

Subsequent exhibits at Beth-El told the story of our Holocaust Torah — a true tale with photos that the Associated Press circulated to news media nationwide.



The dramatic bridal exhibit in Hall of Remembrance: "Over a Century Under the Chuppah in Fort Worth." Photo Credit: Ellen Appel, 2016/Fort Worth Jewish Archives

Two special exhibits brought out of storage 20 stained-glass window panes salvaged from the old Temple on Broadway Ave. The displays led to generous donations from preservationist Judith Singer Cohen and a major preservation award for Beth-El.

To curate exhibits, I tapped the hidden talents of most everyone working or volunteering in the building, including Junior Rivera, a custodian with an artist's eye.

Among our most popular exhibits was "Under the Chuppah: Over 100 Years of Weddings." The Temple's chiffon bridal canopy filled the Hall of Remembrance. Mannequins were outfitted in bridal gowns from different decades and loaned by Joan Rosen, Rachel Goldman, and Melissa Minker. Beth-El librarian Margie Zentner pinned a gown with a sweeping skirt to the bulletin board on the east wall to dramatic effect. Sandra Hollander cut colorful mats to pin behind each photo and caption.

An exhibit that compared Russian Refuseniks who resettled in Fort Worth with South Africans who left their apartheid society was visited by a reviewer from the *Journal of Southern Jewish History*. A party with caviar and shots of vodka celebrated the opening.

Once again, the Hall of Remembrance had created a unique Beth-El experience



Healing prayers



Do you know someone at home or in the hospital who could use a visit from the Rabbi or another temple member?

Do you have the name of an ill family member or friend that you would like to be read at our Shabbat service?

We can't help if we don't know!

Please call at 817-332-7141 or email the temple office at office@bethelfw.org or Rabbi Zimmerman at rabbiz@bethelfw.org

We can't visit or help if we don't know!

Thanks in advance.

Yahrzeits

April 3

Lynne Abrams
Bernard Appel
Mildred Belford
Louis Benno
David Cott
Sarah Cohn Frankel
Eleanor Gachman
Jack Gachman
Ruthe C. Handleman
Vickie Hicks
Richard Karotkin
Molly Koptowsky
Gussie Kunen
Vera Lazarus
David Lesnick
Helene Levin
Sonya Luskey
Charlotte Mehl
David Menscher
Sadie Yonack Miller
Alvin H. Morewitz
Sarah Rosenthal
Charles Sacks
Marilyn Selig
Martin Siegel
Adolph Smulian
Eileen Taylor
Joseph Walderman
Sam Weiner

April 10

Bernie Carb Bronstein
Beth Eisenman
Bernice Etkoff
Beatrice Grossfeld Durst
Nellie Hall
Frances Klotzman
Gertrude Kaplan Lander
Harriette Newman
Simon Oderberg
Ralph Robinowitz
Beverly Rosenfield
Libby Serber
Beatrice Sloane
C.P. Snelgrove
Jack Steinharter
Sophie Urban

April 17

Charles Bock
Berta Braun
Vera Braun
Baby Brown
Dorothy Dobrow
Alan Charles Finkelstein
Gus Flax
Clarence Edwin Mayer
Elwood Minker
Mitzi Ogus
Blanche Pikkell
Cpt. Alfred Gerald Platt
Sanford Reitman
Raymond Roper
Erma Rosenthal
Edward Rubenstein
Bettye Schoenfeld Baccus
Akiva Schreiber
Isaac (Izzy) David Stenzler
Andries Voet
Janette Zevin

April 24

Sylvia Abrams
Myer Bronstein
Duval Cocchi
Jayne Eisen
Hubert Gibson
Adele Goldhamer
Livia Levine
Florence Newman
Stanley Newman
Harry Rubinson
Stanley Schwartz
Lynn Sussman
Annette Taylor
Sam Thal

May 1

Ruth Berkowitz
Bernard Bodner
Sidney Bushner
Adolph Cohen
Robert Cott
John Factor
Nathan Frankel
Nathan Ginsburg
Charlotte Goldman
Dena Gressman
Idella Herbert
Betty Herman
Dennis Kocinski
Elaine Leiken Francis
Bennie Luskey
Casimira Niewa
Edward Osser
Sam Rosenthal
Pearl Schwartz
William Schwartz
Duncan Thomas Ware
Bettye Weltman
Douglas Whatley
Victor S. Young





Beth-El Congregation

4900 Briarhaven Road
Fort Worth, TX 76109

NON PROFIT ORG.
U.S. POSTAGE
PAID
FORT WORTH, TX
PERMIT 1617

Our mission: To meet the spiritual, educational, social, and religious needs of its members through the teachings and practices of Reform Judaism and to connect members to their Jewish identity and community.

ADDRESS SERVICE REQUESTED

Beth-El Congregation
4900 Briarhaven Road
Fort Worth, Texas 76109
www.bethelfw.org
817-332-7141 phone
fax 817-332-7157

Rabbi, Brian Zimmerman: rabbiz@bethelfw.org

Rabbi Emeritus, Ralph Mecklenburger:
rabbi@bethelfw.org

Executive Director, René Woods:
director@bethelfw.org

Education Director, Cantor Shoshana Abrams Kaikov:
shoshanakaikov@bethelfw.org

Music Director, John Sauvey: jesbaritone@gmail.com

Building Manager, Jaime Rivera: cust@bethelfw.org

Student Cantor: Sam Chamberlin

Beth-El Board of Directors:

Michael Appleman, President

Robert Simon, Immediate Past President

Nancy Schwartz, 1st Vice President

Shayna Coyne, 2nd Vice President

Semé Dewees-Cooper, Secretary

Marc Slotter, Treasurer

Directors: Jerry Appel, Yolanda Becker, Erica Bekerman,
Steve Brown, Kim Factor, Kimberly Florsheim, Matthew
Henken, Benjamin Isgur, Max Pell, Karl Rosenblum, Ben
Rosenthal, Faye Slater

WRJ: Ruth Roper and Marilyn Stenzler, Co-Presidents

MRJ: Eric Lawrence, President

FWFTY: Natalie Strausz, President

Contributions

- Make your contribution online at **bethelfw.org** or fill out the form below and mail it with your check to Beth-El Congregation
- **Undesignated donations** will be placed in the Temple Fund.

\$18-minimum contribution: Temple Fund, Religious School Fund, Youth Fund, Library Fund, Music Fund, Mitch Stenzler Scholarship Fund, Rabbi Zimmerman's Discretionary Fund, Rabbi Mecklenburger's Discretionary Fund, President's Discretionary Fund, Religious School Director's Discretionary Fund, Temple Archives, Caring Congregation

\$50-minimum contribution: Rosenthal-Siegel Education Endowment Fund, Operating Endowment Fund, Endowment #2

Other funds: **Tree \$20, Prayer Book \$30, Floral \$50, Tree of Life Leaf \$300**

Contribution Form

Enclosed please find the amount of \$ _____

Designated Fund: _____

In Honor of: _____

In Memory of: _____

Donor Name(s): _____ Please send me

Address: _____ (qty)

_____ additional forms.

Phone: _____

Send acknowledgment to: _____
