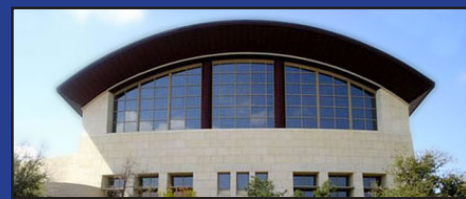


# Beth-Elements

The Bulletin of Beth-El Congregation • A Reform Synagogue Serving Tarrant County

September 2025



## High Holy Days 5786

Rosh Hashanah: Mon., Sept 22

Yom Kippur: Wed., Oct. 1

Schedule of Services on page 2



Brian Zimmerman, Rabbi

## How do you count time?

Rabbi Brian Zimmerman

The new year 5786 begins on Monday night, Sept. 22.

Rosh Hashanah counts from the days

since the creation of the world. Even if we don't believe this exact and literal calculation from the dates mentioned in the Torah, counting in this manner tells a story.

Jews did not always count this way.

An alternate Jewish counting of the years that was once quite common began in 135 CE, with the failure of the Bar Kochba revolt against Rome and the end of Jewish sovereignty. Those who calculated time from this destruction of the temple saw the world as incomplete until a third temple would stand.

If you look closely in the Torah, Rosh Hashanah is not the beginning of the new year for Jews but rather for all people. Nisan, the month of Passover, is counted as the first month for us, and Rosh Hashanah falls in the seventh month. The year begins with a celebration of our freedom from Egyptian oppression. Jews who count time in years since Mount Sinai live in a state

of constant awareness of the gifts of freedom and Torah.

We live in two worlds. We cannot function without the world of 2025. Our jobs, school calendars, vacations, and birthdays are all linked to the cycle of life among our non-Jewish neighbors. We need this counting to function successfully in modern society.

But the American approach to time also informs us that moments idle are moments wasted. Time is a commodity. Time is money, we are told. Every second paused is a second wasted. The Gregorian calendar is many things but, as currently observed, soulful is not one of them.

Rosh Hashanah and the festivals of Sukkot and Simchat Torah that follow it ask us to live in Jewish time as well. To live in 5786, is to pause and reflect on our personal relationships at Yom Kippur. To live in 5786, is to dwell in the Sukkah and be grateful for the food we eat and the home that provides shelter. To live in 5786, is to pause if even for just a bit every Shabbat to remember that life is more than the seconds consumed properly. It is the gift of life itself.

This year, I invite you to spend time in 5786.

## Worship Services

### Minyan with the community

Tuesday-Thursday 6 p.m.

**Welcome Shabbat** with wine, cheese, and friends at 5:30 p.m. Fridays, before the 6:15 p.m. services.

### Friday, Sept. 5

Kabbalat Shabbat with Rabbi Zimmerman and Caroline Slotter ..... 6:15 p.m.

### Friday, Sept. 12

Kabbalat Shabbat with Rabbi Zimmerman and Student Cantor Sam Chamberlin..... 6:15 p.m.

### Saturday, Sept. 13

Shabbat morning Selichot preparation with Rabbi Zimmerman and Student Cantor Sam Chamberlin at Rabbi Zimmerman's house ..... 10:30 a.m.  
Selichot evening study and service ..... 7 p.m.  
(Selichot weekend details, page 2.)

### Friday, Sept. 19

Kabbalat Shabbat with Rabbi Zimmerman and John Sauvey ..... 6:15 p.m.  
(Rosh Hashanah services Sept. 22-23)

### Friday, Sept. 26

Shabbat T'Shuvah and Kabbalat Shabbat with Rabbi Zimmerman and Student Cantor Sam Chamberlin ..... 6:15 p.m.  
(Yom Kippur services Oct. 1-2)

### Friday, Oct. 3

Kabbalat Shabbat with Rabbi Zimmerman and Student Cantor Sam Chamberlin  
Guest speakers Janice and Frank Feinberg (See page 9.) ..... 6:15 p.m.

### High Holy Days Service Schedule on page 2

All services are in person; services can be streamed at: [youtube.com/BethElCongregation](https://youtube.com/BethElCongregation).

# High Holy Days 5786 Service Schedule

## Monday, Sept. 22

Rosh Hashanah evening service ..... 7:30 p.m.\*  
Followed by WRJ Reception

## Tuesday, Sept. 23

Family Service ..... 9 a.m.\*  
Rosh Hashanah morning service ..... 10:30 a.m.\*

## Friday, Sept. 26

Kabbalat Shabbat T'shuvah service  
with Rabbi Zimmerman ..... 6:15 p.m.

## Sunday, Sept. 28

Kever Avot memorial service  
Emanuel Hebrew Rest Cemetery ..... 10 a.m.  
Beth-El Section of Greenwood Cemetery ..... 11 a.m.

## Wednesday, Oct. 1

Kol Nidre ..... 8 p.m.

## Thursday, Oct. 2

Family service ..... 9 a.m.\*  
Yom Kippur morning service ..... 10:30 a.m.\*  
Discussion in the library ..... 12:45 p.m.\*  
Jewish Reflection and Song  
in the chapel with Angie Friedman ..... 2:15 p.m.\*  
Afternoon service ..... 3 p.m.\*  
Yizkor and Neilah ..... 4:15 p.m.\*  
Followed by Break the Fast

Family services, the afternoon Yom Kippur discussion, and Reflection in the chapel will be in person only.

\*Membership cards or special tickets required for all High Holy Day services. If you did not receive yours, please contact the Temple office ASAP.



Michael Appleman

# President's Message

..... Temple President Michael Appleman

I wrote last month and mentioned being smack dab in the middle of

summer. This time, we are at summer's end and the school year's beginning, which affects those of us with such aged children more directly – unless school zones are on your regular daily path. How quickly time flies and how abruptly there is a shift from unstructured busy and fun and wild (chaos?) to a more regularly scheduled busy and fun and wild (controlled chaos?).

Before we know it, college football and Religious School will have started. And, of course, the High Holy Days cannot be far behind. Watch this bulletin and the Temple's website for all the information you will need, including when and how to join us for services, either in person or via our livestream.

Thanks be to Shoshana Kaikov, our teachers, and *madrichim* for their efforts to provide an enriching experience to our younger congregants, as

well as to a small but dedicated group of men who provide video access to our rituals, prayers, songs, and sermons to those who want or need to participate remotely. While we would love to have you watchers in person, we acknowledge the comfort and joy of *gutjuntif* (phonetically for alliterative elegance) in your jammies! Preparations are being made for the Rosh Hashanah Oneg hosted by our fabulous WRJ and the community Break-the-Fast at the conclusion of Yom Kippur. Please make your reservations for the latter to ensure we have enough lox and cream cheese.

The High Holy Days, often coming about the time the summer heat breaks and the seasons change, give us the opportunity each year to reset, recharge, and, in some ways, start over. Let us all take advantage and do so by rededicating ourselves to our families, friends, and faith.

*L'shanah tovah tikateivu v'te-ichateimu.*

# Selichot Scholar Weekend Sept. 12-13

Our special guest and teacher will be Student Cantor Sam Chamberlin who will share special holiday tunes, stories, and teachings to prepare us for our holiday services.



Sam Chamberlin

## Friday, Sept. 12

6:15 p.m. Shabbat service teaching: "Piyyutim: Religious Poetry of Preparation and Grounding."

## Saturday, Sept. 13

10:30 a.m. Shabbat morning Selichot preparation at Rabbi Zimmerman's home. "A Deep Dive into Religious Poetry" with Sam Chamberlin.  
7 p.m. Pre-Selichot dessert reception  
7:30 p.m. Niggun Circles, Eastern (Mizrachi) Poetry and Selichot service with Sam Chamberlin and the Beth-El Choir.



Shoshana Abrams Kaikov

# Religious School: Mi Chamocha: Who Is Like You?

Education Director, Cantor Shoshana Abrams Kaikov

Be Courageous. Be Kind. Be You.

It's hard to believe the new school year is

upon us. This year, I am excited to share that we will be exploring the spectacular theme of *Mi Chamocha*: "Who is like You, O God, among the mighty?" (Exodus 15:11)

These ancient words were sung by our Israelite ancestors as they emerged from Egyptian slavery, triumphantly crossing the Sea of Reeds. These powerful words are a tribute to great courage, faith, and the enduring spirit of freedom — and they remind us to stop and notice the extraordinary in the ordinary, to celebrate the unique spark that lives within each of us, and to stand up for justice, kindness, and faith.

As a school community, we will journey through the academic year using *Mi*

*Chamocha* as our central theme, exploring the following questions: What makes each of us unique? Where do we experience awe and wonder? How can we infuse our lives with Jewish values?

## *How students will engage with our theme:*

- *Tefillah* (prayer) and music that brings *Mi Chamocha* to life
- Study of Torah and other sacred texts that focus on bravery, leadership, and identity
- Creative projects that express individuality and values
- Community service and mitzvah opportunities that encourage empathy and action

## *How families can join our sacred journey:*

- Attend Religious School Shabbat and weekly services, Tot Shabbat, Havdalah

Under the Stars, Sukkot family events, Mitzvah Day, and more.

- Discuss and carry out Jewish values at home.
- Explore "Mi Chamocha Moments" when you or your child see someone doing something kind, courageous, or inspiring.
- Join us for schoolwide celebrations and service projects that highlight the strength of our community.

We look forward to an incredible school year filled with song, *Ruach* (spirit), friendships, growth, discovery, and connection. May we each find our voice and our courage as we walk in the footsteps of our ancestors and sing our very own Song of the Sea!

**5786 Beth-El Religious School Registration is Now Open!**

**Already a Member?** Just log into ShulCloud and complete the Registration Form.

**New to Beth-El?** Fill out the Membership Form first, then register for school. Once both are submitted, you'll be able to access your ShulCloud account.

**Scan the QR code below to sign up today!**

We're SO excited to see everyone at Opening Day of Religious School on **Sunday, September 7th at 9:30am!**

**BETH-EL RELIGIOUS SCHOOL**

**OPENING DAY**

**BAGEL BREAKFAST AND ASSEMBLY**

**SUNDAY, SEPTEMBER 7<sup>TH</sup> AT 9:30AM**

**BRING THE WHOLE FAMILY AND JOIN US AS WE KICK OFF THE 5786 SCHOOL YEAR WITH A CELEBRATION!**



# Women of Reform Judaism

..... WRJ Past President Michelle Hartman



Hello WRJ Sisters. Please help us welcome our new WRJ co-Presidents Ruth Roper and Marilyn Stenzler. These

two wonderful ladies are pillars of our community and have a wealth of experience. They will make fabulous leaders for our WRJ. Also, please welcome our newest VP of Membership Nikki Slobodin and new Recording Secretary Mimi Zimmerman. We will learn more about these ladies in the coming months' bulletins.

WRJ is already making plans for our annual Rosh Hashanah reception in honor of Rabbi Brian and Mimi Zimmerman and Rabbi Ralph and Ann Mecklenburger. This year's reception will be after the Erev Rosh Hashanah service on Monday, Sept.

22. Everyone is welcome and encouraged to attend. We are accepting homemade desserts for the reception, donations to the Rosh Hashanah reception (in your High Holy Days booklet), as well as seeking volunteers for our **Rosh Hashanah bake-in on Sunday, Sept. 21**. The morning shift will do the baking and the afternoon shift will do the plating. Please contact Ruth Roper, or fill out your High Holy Days booklet, with how you'd like to help this year.

It's also time to sign up or renew your WRJ membership for the coming year.

## Save the Date:

The **2025 WRJ Annual Brunch** will take place **Sunday, Nov. 16**. Stay tuned for more details!

(See page 8.) Please fill out the form at [bethelfw.org](http://bethelfw.org), or you can pick up a paper form in the Beth-El office. We have a great year with many wonderful events planned, and without you, we're one woman short!



Eric Lawrence

# Men of Reform Judaism

..... MRJ President Eric Lawrence

As I am writing this, we are gearing up for our August events. As you

read this, they will be history.

These August events will include an MRJ member barbecue at the home of Mitch Reitman, which is an annual event that has a special significance for me. I first attended this event two years ago, shortly after joining Beth-El. Meeting other members that day is what encouraged me to become more involved.

Additional August events include

cooking for the New Member Shabbat as well as a barbecue for the summer movie night event. We will also be holding our first MRJ meeting since Eric Deutsch stepped down as MRJ president.

Looking ahead to September, MRJ will be there with refreshments for the **start of Religious School on Sunday, Sept. 7**. Later in the month, MRJ volunteers will build the Sukkah.

Thank you to our members who donate their time and effort to make all of what we do possible.

See page 8 for MRJ membership information.

# Library Reviews

..... Margie Zentner

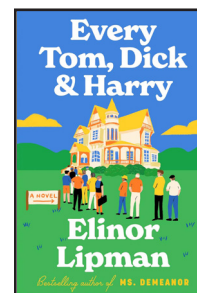


## This Is a Love Story

by Jessica Soffer

is a novel that explores the complexities of marriage, parenthood, and artistic ambition through the lives of Jane and Abe and their son, Max, in New York City. The story is told from multiple

perspectives centered around Central Park where the couple had been coming for 50 years, alone when they needed it and together when they had something important to discuss. Now, Jane is dying and Abe is recounting their lives together as the story delves into the passage of time, the impact of relationships, and the enduring nature of love.

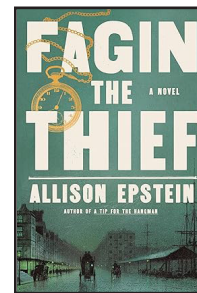


## Every Tom, Dick & Harry

by Elinor Lipman

is a delightful, witty, and heartwarming novel set in the fictional town of Harrow, Massachusetts. It follows Emma Lewis as she returns home to take over her family's estate sale business

and navigates love, family, and the secrets of a seemingly respectful bed and breakfast. The plot includes unexpected twists and a touch of romance.



## Fagin the Thief

by Allison Epstein

is a historical fiction novel that reimagines the origins of Charles Dickens' infamous Fagin from *Oliver Twist*. The narrative begins with a young Jacob Fagin, living in a Jewish enclave and navigating a

world marked by poverty and anti-Semitism. After his mother's death, a crucial encounter with a pickpocket introduces Fagin to a world of thievery that offers him better prospects than the limited options available to lower-class Jews. He becomes a mentor of sorts, taking in orphans and runaways, forming a "found family" in the shadows of London's underworld.

# Contributions

---

## **Archive Fund**

In Memory of Keith Fenton

· Judith Cohen

In Memory of Joan Rosen

· Judith Cohen

In Memory of

Esther and Michael Winesanker

· Miriam Levy

## **Floral Fund**

In Memory of Mrs. Jean Rasmussen

· Yuyo Westermann

## **Library Fund**

In Memory of Steve Ginsberg

· Judie B. & Robert Greenman

In Memory of Joan Rosen

· Judie B. & Robert Greenman

In Memory of Cynthia Gilbert

· Judie B. & Robert Greenman

## **Mitch Stenzler Sunday School Scholarship Fund**

In Memory of Joan Rosen

· Sonya Stenzler

In Memory of Bessie Bodzy

· Sonya Stenzler

In Memory of Ruth Sandler

· Stenzler Family

## **Operating Endowment Fund**

In Memory of Rolly F. Schur

· William & Holly Schur

## **President's Discretionary Fund**

· Howard S. & Joan Katz

## **Rabbi Mecklenburger's Discretionary Fund**

In Memory of Keith Fenton

· Rick & Lesli Siegel

## **Rabbi Zimmerman's Discretionary Fund**

In Honor of Rabbi Zimmerman

· Robert & Phyllis Fenton

In Memory of Lana Fleischman

· David Fleischman

In Memory of Michael Handleman

· Caren Handleman & Steve Pew

In Memory of Miriam A Schultz

· Louis & Leigh Schultz

## **Religious School Fund**

In Memory of Joan Rosen

· Steve & Carol Kline

In Memory of Harry Jacob Kline

· Steve & Carol Kline

## **Religious School Director's Discretionary Fund**

In Memory of Sullivan Collins

· Harry Leventhal &

Judi Massis-Leventhal

## **Temple Fund**

· Nathan Smith

For renovation of the coat closet

· Judie B. & Robert Greenman

For building beautification

· Howard S. & Joan Kat

In Honor of Sonya Stenzler's

90th birthday

· William & Holly Schur

In Honor of Brigitte Altman's

100th birthday

· Michael & Beverly J. Ross

In Honor of a Rapid Recovery for

Charna Blumberg

· Michael & Beverly J. Ross

In Honor of a Rapid Recovery for

Scott Minker

· William & Holly Schur

In Honor of a Rapid Recovery for

Ben Rosenthal

· William & Holly Schur

## **Temple Fund (continued)**

In Memory of Joan Rosen

· Michael & Beverly J. Ross

· Howard Baum

· Roslyn Rubin

· Karen & Richard Savitz

· William & Holly Schur

· Sara & Richard Williams

· Louise Lamensdorf

· James Stanton

In Memory of Keith Fenton

· Michael & Beverly J. Ross

· Bruce & Hollace Weiner

· William & Holly Schur

· Louise Lamensdorf

In Memory of Cynthia Gilbert

· Adrienne & Tom Rosen

· Roslyn Rubin

· Doug & Ruth Roper

· Jeanne Ginsberg

· Julia & Stuart Brown

In Memory of Steve Ginsberg

· James Stanton

· Susan Lebow & Jessica Pfeffer

In Memory of Sheila Shwiff Rosenfield

· William & Holly Schur

In Memory of Elisa Kaplan Miller

· William & Holly Schur

In Memory of Morton Meyerson

· Michael & Beverly J. Ross

In Memory of Abraham Leventhal

· Harry Leventhal &

Judi Massis-Leventhal

In Memory of Jean Whatley

· Michael & Beverly J. Ross

In Memory of Claire Smith

· Donna Rankin

## **Tree Fund**

In Memory of Sandra Luskey

· Greg & Marcy Phillips

In Memory of Bessie Bodzy

· Greg & Marcy Phillips

## **Youth Fund**

In Memory of Keith Fenton

· Michael & Elaine Griver

In Memory of Joan Rosen

· Michael & Elaine Griver

In Memory of Sally Lynn Schur

· William & Holly Schur

# Primetimers

.....Michelle Hartman

## Thursday, Sept. 25, noon

Chag Sameach, Primetimers! We have a special program, called "The Sound of the Shofar: Special Tunes that Move Us — *Tshuvah*," on a special date, Thursday, Sept. 25.

We all know the sound of the shofar is an important part of the High Holidays, but did you know it has its own special liturgy on Rosh Hashanah? Come explore this unique combination of music and text with Student Cantor Samantha Chamberlin!



We will start at noon with lunch from La Madeleine (or bring your own), with the program to follow at 12:30 p.m. For \$13 you get chips, a cookie, and your choice of:

- Chicken salad croissant
- Roast beef sandwich
- Pesto caprese sandwich

We will have some wonderful homemade desserts to share with everyone. Make sure to mark this special program on your calendar and please RSVP by Sunday, Sept. 21, to Michelle Hartman at hartman8729@sbcglobal.net or 817-706-3451.

# People of the Book

.....Sheryl Levy

People of the Book is Congregation Beth-El's longstanding book group. We have lively discussions about books with Jewish themes or by Jewish authors. We meet on selected Tuesday mornings, from 10 a.m. to 11 a.m. in the Beth-El library. In July, author Reuven Fenton joined us via Zoom to discuss his book, *Goyhood*. The September book selection and date are TBD. Please contact Sheryl Levy (slevy2608@gmail.com) for more information or if you would like to be put on our contact list. We would love to have you. The more people, the more ideas, the better the discussions.

# College Student Outreach

It's time again to connect with Beth-El college students. PLEASE send Rabbi Zimmerman your college student's address, EVEN if you did it last year.

We'll send them packages during the year, or maybe even visit their campus. ALL parents who get their student's address to Rabbi by Sept. 15, will be guaranteed that a Starbucks card will be sent to the student for a sweet New Year.

**Send your student's name, address, e-mail, phone, and birthday by Sept. 15 to: rabbiz@bethelfw.org:**

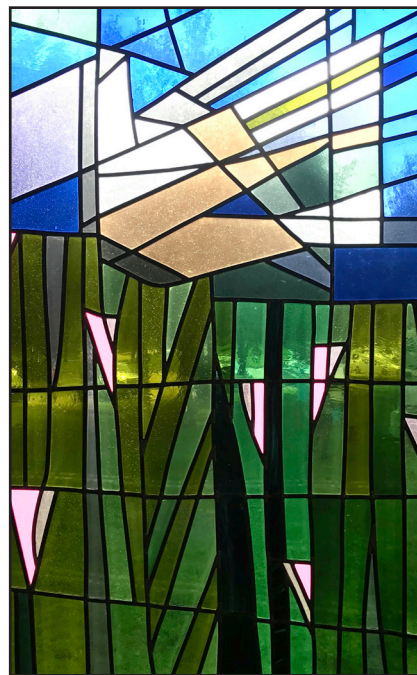
# Beginner Hebrew

**Sundays at 12:15 p.m., starting Sept. 21**

*Beginner Hebrew is back!*

New and continuing students will learn the Hebrew alphabet and basic prayer reading. No prior knowledge of Hebrew required. Our teacher is Semé Cooper, a member of our Religious and Hebrew school teacher team. Please note that the class has a registration and book fee. If there are financial concerns, contact Rabbi Zimmerman.

These classes are made possible in part by the generosity of the Jewish Federation of Fort Worth and Tarrant County. They are opened to all in the community, Jewish and non-Jewish.



# Curious About Conversion Class

**Begins Tuesday, Sept. 16., 7:30 p.m.**

Come explore the customs and culture, festivals, and philosophy of Judaism. The yearlong class, which is open to all those interested in conversion, will meet monthly and look at some of the broad themes and ideas, customs, and concepts of Jewish life as well as offer participants a chance to meet others who have already converted. All in a safe place to ask questions.

A prerequisite for this class is an in-person or phone conversation with Rabbi Zimmerman and a commitment to the readings and assignments that are a part of the initial conversion process. While taking this class is a requirement for conversion, it does not commit one to converting. There is no expectation that all participants will choose this path. Contact Rabbi Zimmerman for more information.

# September - 2025 - 5785-5786

Sunday	Monday	Tuesday	Wednesday	Thursday	Friday	Saturday
	1 TEMPLE OFFICE CLOSED	2 Noon Jewish Puzzle of Life 6 pm Evening Minyan	3 9 30 am Archives Meeting 11 am Gift Shop open 6 pm Evening Minyan	4 6 pm Evening Minyan	5 5:30 pm Shabbat welcome 6:15 pm Kabbalat Shabbat Service	6 9 am Zoom Torah Study 10:30 am Confirmation class (offsite)
3 9 30 am First day of Religious School 10 45 am MRJ meeting	8 7 pm Board Meeting	9 6 pm Evening Minyan	10 9:30 Archives Meeting 11 am Gift Shop open 6 pm Evening Minyan	11 6 pm Evening Minyan	12 5:30 pm Tot Shabbat 5:30 pm Shabbat welcome 6:15 pm Kabbalat Early Shabbat Service	13 SELICHOT 9 am Zoom Torah Study 10 30 am Selichot study and lunch at Rabbi's house 7 pm Selichot at Beth El, with Student Cantor Sam Chamberlin
14 9:30 am Religious School	15	16 Noon Jewish Puzzle of Life 6 pm Evening Minyan 7 30 pm Curious About Conversion	17 9:30 Archives Meeting 11 am Gift Shop open 6 pm Evening Minyan	18 6 pm Evening Minyan	19 5:30 pm Shabbat welcome 6:15 pm Kabbalat Early Shabbat Service	20 9 am Zoom Torah Study
21 9 am WRJ Rosh Hashanah Bake-in 9:30 am Religious School 12:15 Adult Beginner Hebrew	22 ROSH HASHANAH 7:30 pm Erev Rosh Hashanah service	23 ROSH HASHANAH TEMPLE OFFICE CLOSED 9 am Rosh Hashanah children's service 10:30 am Rosh Hashanah morning service	24 9:30 Archives Meeting 11 am Gift Shop open 6 pm Evening Minyan	25 Noon Primetimers 6 pm Evening Minyan	26 5:30 pm Shabbat welcome 6:15 pm Kabbalat Shabbat Service	27 9 am Zoom Torah Study
28 MRJ Sukkah build 9:30 am Religious School Turning Points in Jewish History with Rabbi Mecklenburger 10 am Kever Avot at Hebrew Rest 11 am Kever Avot at Greenwood Cemetery 12:15 pm Adult Hebrew	29	30 6 pm Evening Minyan	Oct. 1 YOM KIPPUR 8 pm Erev Yom Kippur service (Kol Nidre)	2 YOM KIPPUR TEMPLE OFFICE CLOSED 9 am Children's Service 10:30 Morning Service 12:45 Music, Readings 2:15 Reflection, Music 3 pm Afternoon Service 4:15 Concluding Service	3 5:30 pm Shabbat welcome 6:15 pm Kabbalat Shabbat Service	4 9 am Zoom Torah Study

For additional information and updates about events, please visit our website at [www.bethelfw.org](http://www.bethelfw.org) or see Rabbi's e-blasts.



# Join a community within the community

**J**oining the Women of Reform Judaism or the Men of Reform Judaism can provide congregants with a sense of community, opportuni-

ties for personal and spiritual growth, avenues for social justice advocacy, and community service within the Reform Jewish community. It's a space to con-

nect with others, learn, lead, explore Jewish values, and contribute to both the congregation and the wider world. All are welcome.

## WRJ - Women of Reform Judaism - Sisterhood

Beth-El Congregation's Women of Reform Judaism (WRJ) embraces the essence of "Sisterhood," bringing together a diverse group of women to celebrate and strengthen their common bond. Whether you grew up Jewish, have a Jewish partner, or you're raising a Jewish child in a world that isn't always understanding, WRJ provides opportunities to grow in a warm, supportive environment. Our members are leaders within the congregation and the community, advocating for progressive Jewish values, and cultivating spiritual growth and lifelong friendships.

WRJ relies on membership dues and participation to plan fun and enlightening events including: our Annual Brunch, the Rosh Hashanah Reception, Second Night Seder, happy hours, a women authors book club, Rosh Chodesh gatherings, and more. WRJ also operates and runs the Judaica Gift Shop in Beth-El which supports our Religious School, Jewish camp scholarships, and college scholarships.

For more information contact one of our Co-Presidents:  
Ruth Roper (ruthroper714@gmail.com) or Marilyn Stenzler (mkstenzler@gmail.com)

Annual Levels of Support:

\$36.00 Sister (Basic Membership)  
\$54.00 Timbrel Sister  
\$72.00 Sustaining Sister  
\$108.00 Super Sister  
\$252.00 Mitzvah Sister  
\$504.00 Woman of Valor



To Join WRJ, visit the Beth-El Congregation website:  
<https://bethelfw.shulcloud.com/form/women-of-reformed-judaism-membership-application-25-26.html>

or scan the QR code.

## MRJ - Men of Reform Judaism - Brotherhood

The MRJ of Beth-El Congregation is much more than a social club. Through MRJ, our men are enriched by their participation in congregational and community life. They practice *tikkun olam* — their efforts help to make our synagogue and our community a better place. They help our Religious School, our staff, and our membership all while having fun and enjoying each other's company. Beth-El's MRJ members are active and look forward to social events, monthly meetings, and activities which support our congregation.

Payment of dues is not a requirement for membership in the Beth-El MRJ, however, we welcome a donation in any amount of your choosing to help provide support for the college and camp scholarships, social activities and the services we provide to the congregation. Fifty dollars (\$50) is the suggested donation, but any amount is welcomed.

What MRJ does:

Assistance with Religious School events.  
Cater bar and bat mitzvah luncheons and other special events.  
Annual golf tournament and fundraiser.  
Construct and take down the Temple's sukkah.  
Host and cater annual Jewish War Veterans' breakfast.  
Latkes, latkes, latkes: Hundreds prepared for Chanukah.  
Scholarships for high school seniors and Greene Family Campers.  
Host annual Xmas Eve Chinese dinner and trivia contest.  
Mickey Goldman Spaghetti Dinner to honor a volunteer of the year.

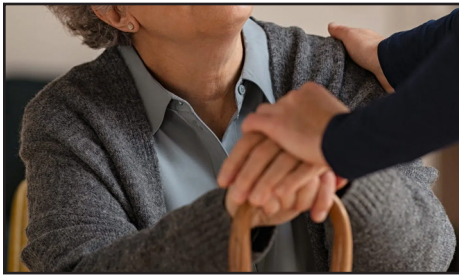


To join MRJ, visit the website:  
<https://bethelfw.shulcloud.com/form/men-of-reformed-judaism-membership-application-25-26.html>

or scan the QR code

For more information, please email MRJ President Eric Lawrence (elawr1951@yahoo.com) or Membership Chair Russ Schultz (fineartsdean83@gmail.com).





## Healing prayers and visits

If you know someone at home or in the hospital who could use a visit from the Rabbi or another Temple member, or if you have the name of an ill family member or friend that you would like to be read aloud at our Shabbat services, call the Temple office or go directly to our website: **Community, Mi She-beirach/Prayer and Visit Request**.

Rabbi Zimmerman and Reneé Woods will get the information from this site quickly.

Thanks in advance for your help.



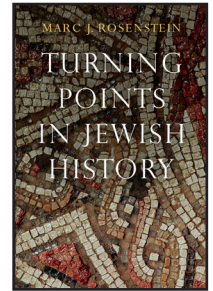
Ralph Mecklenburger

## Sunday Study with Rabbi Mecklenburger

**An Adult Discussion of "Turning Points in Jewish History"**  
Sunday, Sept. 28, 9:30 a.m.

The author of this year's discussion-starter book is an American-born Reform rabbi, Marc J. Rosenstein, who earned a Ph.D. in history from the Hebrew University and now lives in Israel. Our plan is to read 14 of the 30 short chapters in the book — mostly the post-biblical "turning points" that most of us have heard about but not delved into. Rabbi Rosenstein provides an introduction and a significant primary-source quotation for each period. For instance: How do our people's contact with Greek and Roman culture, Jewish mysticism, Achad Ha'am's Zionism, and contemporary feminism continue to influence our Judaism today? (The book is available in paperback from Amazon and other book dealers.)

The first class will meet in the Board Room on Sept. 28, 9:30-10:40 a.m. during Religious School.



Frank and Janice Feinberg

## Jewish Journey to the Balkans

**Friday, Oct. 3, 6:15 p.m.**

Join us for a special Shabbat presentation featuring guest speakers Janice and Frank Feinberg (mom and dad of our student cantor), who will share recollections from their "Jewish Journey to the Balkans, with Old Friends and New Friends."

## Become a Reading Mentor

.....Jim Stanton

In just one hour a week you can help a child learn to love reading by participating in a rewarding joint program between Beth-El and Ahavath Sholom congregations. By becoming a Reading Mentor, you'll be paired with first graders at nearby Westcliff Elementary on South Drive, working with one or two children for 30 minutes each during sessions that run from mid-October through May. If you have a conflict or are traveling, a substitute tutor can cover for you.

No experience needed.

In a 90-minute training session you'll learn how

to help a child improve their reading skills using a simple, structured guide. For more info, contact Phyllis Levy, 817 346-3550, or Jim Stanton, 817 307-9167.

Promotional support provided by the Jewish Federation of Fort Worth & Tarrant County.



## Then and Now: *Where have all the bowlers gone?*

Hollace Ava Weiner, Temple Archivist



Hollace Weiner

Remember when bowling leagues were a popular pastime? Throughout the 1960s and 1970s, parents dropped their kids off at Sunday school

and headed over to Wedgewood Bowl, where the lanes were filled with teams from the local B'nai B'rith lodge.

Why have bowling leagues largely disappeared? A book titled *Bowling Alone*, by Jewish sociologist Robert D. Putnam, concluded that changes in work schedules, family structure, and suburban life — as well as the ubiquity of computers and smart phones — led to the collapse of community as we once knew it. Americans became increasingly disconnected from friends, neighbors, and organizations.

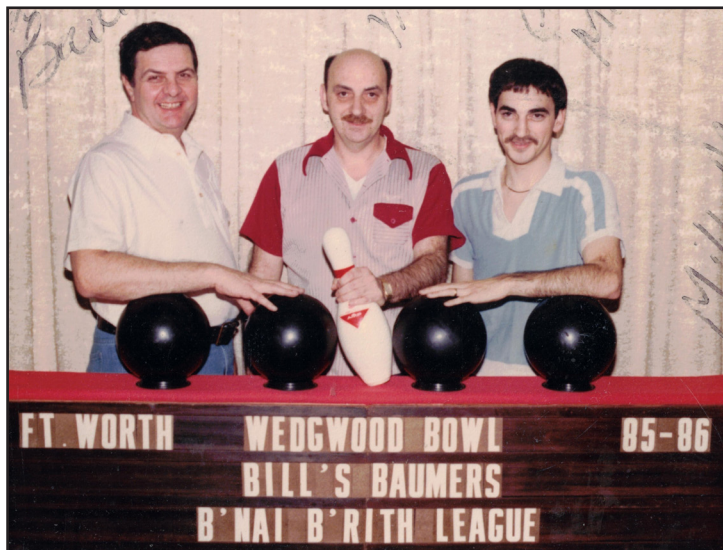
Bill Margolis, who volunteers in the Temple Archives, found two dozen pictures of bowling teams that competed in 1984 and 1985, a period when he and his wife, Rosanne, bowled weekly — she with B'nai B'rith Women and he with the guys. With other couples, they traveled

to state tournaments in New Orleans, Oklahoma City, Dallas, Houston, and elsewhere. Bowling leagues fostered a regional sense of Jewish community.

Bill chaired some of those tournaments. Last June he found a drawer filled with team photos, score sheets, registration forms, and competition booklets — it was a veritable

time capsule. He brought everything to the Beth-El Archives office in the Temple library, and our first task was to identify each bowler in the photos. Van Stenzler, Dale Bronstein, along with Bill and his son, Gary, helped with IDs.

Archivist Cara Luftman Jones worked with Bill to create a lively exhibit board to display in Beth-El's Hall of Remembrance and titled it "Bowling With B'nai B'rith."



Kenneth Baum, left, Bill Margolis, and his son, Gary Margolis, named their 1985 bowling team Bill's Baumers. (Photo courtesy Bill Margolis/Fort Worth Jewish Archives)

Wedgewood Bowl closed more than 30 years ago. The vacant building at Granbury Road and Wonder Drive was demolished in 2010. Nowadays, bowling is more casual than competitive. Most bowling lanes are located in giant recreation centers that offer dozens of other games and entertainment. And Fort Worth's B'nai B'rith Lodge is the last active chapter in the state.

## Etrogs from Israel



Make Sukkot even more special this year by ordering an Etrog from Israel and celebrate the holiday in your own home. Lulav and Etrog sets are only \$36.

Contact [rabbiz@bethelfw.org](mailto:rabbiz@bethelfw.org) by **Sept. 15** to place your order.

## Save the Date:

### Service and Dinner in the Sukkah Friday, Oct. 10, 6 p.m.

Join your friends for pizza in the hut — and lasagna, too! — at this year's short, family-oriented Sukkot service.

\$5 per person for all over 3 years old for an amazing meal from Joe's Pizza and, hopefully, amazing weather!

Please RSVP for dinner by calling the office by **Oct. 7**.



# Yahrzeits

## September 5

Melvin Blumberg  
David McLaurin Campbell  
Ira Diamond  
Elias Friedmann  
Marcus Ginsburg  
Carol Gold  
Lora Goldin  
Leslie Kaitcer  
Seymour Lawrence  
Hildegard Lehmann  
Marc "Manny" Sands  
Joseph Strassman  
Herberto Tabo

## September 12

Fredric Gans Altman  
Harry Archenhold  
Jerry Berkowitz  
Claire Blackman  
Alice Burke  
Jack Cohen  
Lillian Deutsch  
Jack Dewees  
David A. Feld  
Albert Gerrick  
Michael Kanzer  
Frank Koptowsky  
Julius L. Kottler  
James Robert Kunen  
Kenneth Marks  
Irving Rapfogel  
Jacob Ross  
Henry Schwartz  
Eugene Urbach  
Minette Urbach  
Reed Warner

## September 19

Dr. Elliott Blumberg  
Jeanne Brown  
Julie Bush  
Frances Feuer  
Herman Forman  
Jacob Frankel  
Sherle Haber  
Ethel Kaplan  
George LaMere  
Frances Rothstein  
Paul Schwartz  
Clara Zack  
Myer Zevin

## September 26

Genia Altschuler  
Sylvia Becker  
Andrew Friedberg  
Edith Zodin Gachman  
Mollie Ginsburg  
Steve Grisham  
Bernie Hollander  
Carmen Lederman  
David Lesky  
Corrie Nackson  
Dorothy Daniels Polsky  
Sondra Pritchard  
Elaine Gressman Samson  
Jack Sherman  
Sarah Smulian  
Carol Toobin  
Rhea Waxman

## October 3

Graham Baker  
Arthur Beck  
Ted Brown  
Chandler Greines Cohen  
Louise Freeman  
Jean Frolkis  
Chester Gestring  
Elise Schoenberg Greenman  
Jerry Lamensdorf  
Victor Leventhal  
Mark Pell  
Val Pikkel  
Sam Reznikoff  
Norman Rubin  
George Sepp  
Rose Ungar  
Seymour Weisser  
Hortense Weltman



## *Finding Our Place in the Jewish Puzzle of Life:*

### **A Search for Personal Theology with Rabbi Zimmerman Tuesdays, Sept. 2 and 16, noon**

Our afternoon conversations, now in their fourth year, are a chance to explore the world in which we live seeking context and answers from past Jewish teachers.

We'll move between recent articles, current events, philosophy, and older Jewish prayers and texts — all with the goal of articulating a personal theology. We continue with responses to anti-Semitism from Emil Fackenheim, Leo Baeck, and others.

Want to join us? Drop by anytime or contact Rabbi Zimmerman for information.





Beth-El  
Congregation

4900 Briarhaven Road  
Fort Worth, TX 76109

*Our mission: To meet the spiritual,  
educational, social, and religious needs  
of its members through the teachings  
and practices of Reform Judaism and  
to connect members to their Jewish  
identity and community.*

**ADDRESS SERVICE REQUESTED**

NON PROFIT ORG.  
U.S. POSTAGE  
PAID  
FORT WORTH, TX  
PERMIT 1617

Beth-El Congregation  
4900 Briarhaven Road  
Fort Worth, Texas 76109  
www.bethelfw.org  
817-332-7141 phone  
fax 817-332-7157

Rabbi, Brian Zimmerman: rabbiz@bethelfw.org

Rabbi Emeritus, Ralph Mecklenburger:  
rabbi@bethelfw.org

Executive Director, Renée Woods:  
director@bethelfw.org

Education Director, Cantor Shoshana Abrams Kaikov:  
shoshanaikaikov@bethelfw.org

Music Director, John Sauvey: jesbaritone@gmail.com

Building Manager, Jaime Rivera: cust@bethelfw.org

Student Cantor: Sam Chamberlin

Beth-El Board of Directors:

Michael Appleman, President

Robert Simon, Immediate Past President

Nancy Schwartz, 1st Vice President

Shayna Coyne, 2nd Vice President

Semé Dewees-Cooper, Secretary

Marc Slotter, Treasurer

Directors: Jerry Appel, Yolanda Becker, Erica Bekerman,  
Steve Brown, Kim Factor, Kimberly Florsheim, Matthew  
Henken, Benjamin Isgur, Max Pell, Karl Rosenblum, Ben  
Rosenthal, Faye Slater

WRJ: Ruth Roper and Marilyn Stenzler, Co-Presidents

MRJ: Eric Lawrence, President

FWFTY: Natalie Strausz, President

### Contributions

• Make your contribution online at **bethelfw.org** or fill out the form below and mail it with your check to Beth-El Congregation.

• **Undesignated donations** will be placed in the Temple Fund.

**\$18-minimum** contribution: Temple Fund, Religious School Fund, Youth Fund, Library Fund, Music Fund, Mitch Stenzler Scholarship Fund, Rabbi Zimmerman's Discretionary Fund, Rabbi Mecklenburger's Discretionary Fund, President's Discretionary Fund, Religious School Director's Discretionary Fund, Temple Archives, Caring Congregation

**\$50-minimum** contribution: Rosenthal-Siegel Education Endowment Fund, Operating Endowment Fund, Endowment #2

Other funds: **Tree \$20, Prayer Book \$30, Floral \$50, Tree of Life Leaf \$300**

### Contribution Form

Enclosed please find the amount of \$ \_\_\_\_\_

**Designated Fund:** \_\_\_\_\_

☐ In Honor of: \_\_\_\_\_

☐ In Memory of: \_\_\_\_\_

Donor Name(s): \_\_\_\_\_

☐ Please send me

Address: \_\_\_\_\_

\_\_\_\_\_ (qty)

Phone: \_\_\_\_\_

additional forms.

Send acknowledgment to: \_\_\_\_\_

\_\_\_\_\_  
\_\_\_\_\_