

Beth-Elements

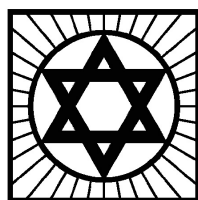
The Bulletin of Beth-El Congregation • A Reform Synagogue Serving Tarrant County



April 2025

Beth-El's Silver Anniversary Fundraiser

Sunday, April 27
9:45 a.m.- 12:15 p.m.



Beth-El
Congregation

*Join us as we celebrate 25 years
at Briarhaven Road.*

March with the Torah | Enjoy brunch prepared by MRJ

For tickets or sponsorships, visit bethelfw.org (or scan QR code)



The Beth-El Community's

Second-Night Seder

Sunday, April 13, 5:30 p.m.

Scan QR code or see page 11 for more information.



Worship Services

Minyan with the community

Tuesday-Thursday 6 p.m.

Welcoming Shabbat reception

Fridays, before the 6:15 p.m. services. Enjoy wine, cheese, and friends 5:30 p.m.

Friday, April 4

Religious School-led
Special Shabbat service 6:15 p.m.

Friday, April 11

Kabbalat Shabbat with
John Sauvey and Genie Long 6:15 p.m.

Friday, April 18

Kabbalat Shabbat with Rabbi Zimmerman,
John Sauvey, Hans Grim and the
Beth-El Choir 6:15 p.m.

Saturday, April 19

Shabbat morning and seventh day of Passover
(Yizkor) service of song and study at Rabbi Zimmerman's home with Angie Friedman 10:30

Friday, April 25

Kabbalat Shabbat with Rabbi Zimmerman
and Angie Friedman 6:15 p.m.

Friday, May 2

Tot Shabbat with Cantor Shoshana
and Friends 5:30 p.m.
Kabbalat Shabbat with Rabbi Zimmerman,
John Sauvey, and Hans Grim 6:15 p.m.

Saturday, May 3

Shabbat morning service and
Bar Mitzvah of Campbell Schneider 10:30 a.m.

All services in person and streamed at
youtube.com/BethElCongregation.



Robert Simon

President's Message

.....Temple President Robert Simon

Beth-El Congregation is a busy place. On March 7, we celebrated a special 7:30 p.m. Shabbat service and Oneg for our Sanctuary Circles members. These are members who pay above standard dues to support our synagogue financially. The Oneg featured delicious food and desserts prepared by our wonderful congregants. We will celebrate another special Shabbat service and Oneg in the late spring, after Passover, to recognize our many volunteers, without whose efforts we could not run our synagogue.

On March 13-14, Beth-El celebrated Purim with a megillah reading during the Thursday evening minyan and an Irish-themed Purim spiel during the Shabbat evening service. We thank the talented Shayna Coyne, a theater teacher, for her comedic skills and efforts directing the show, which was light-hearted and hilarious, in the true spirit of Purim.

Passover is coming. The Congregational Second-Night Seder is scheduled for **Sunday, April 13**. This exciting family event typically fills the Great Hall. Make your reservations. We look forward to seeing you.

Beth-El's Annual Fundraiser will take place **Sunday morning, April 27**. The theme is our 25th anniversary in our new building on Briarhaven Road. The

celebration will begin with a Torah March around the building at 9:30 a.m. to commemorate the seven-mile Torah march in August 2000 from the old synagogue building at Galveston Street and Broadway Avenue to our new building. Afterward, adults will gather for brunch in the Great Hall. We will send invitations to members. Please RSVP, attend, and contribute what you are able. Our synagogue is there for you and your family, but only if you support it. Please give generously.

Beth-El has a new logo that beautifully evokes the artistic design of a Magen David (Star of David) surrounded by rays of light on our front gate. We have been working for several months on a new, more user-friendly website, which should go live before the Annual Meeting. We are very excited about it. We hope you will visit it often.

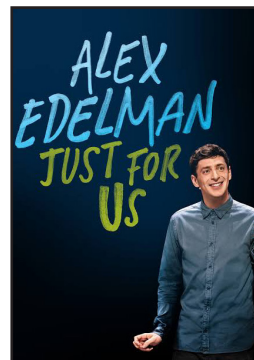
On Feb. 9 and March 9, I held workshops in the Great Hall for any members who wanted to review and discuss the proposed new Bylaws. Interested congregants attended each workshop, asked questions, made suggested revisions, and worked with me to craft new language, which I included in a revised set of Bylaws. On March 10, the Board of Directors approved the revised set of Bylaws, which will be posted on the website and submitted to the Congregation for final approval at our **Annual Meeting on May 18**. I look forward to seeing you there. L'Shalom.

Gaga Pit Fundraiser

Rabbi Zimmerman, right, took a pie to the face (actually about 50 of them) at our Purim carnival to help FWFTY raise money for a new Gaga Pit. We are two thirds of the way there! Contact Rabbi Zimmerman or go to the Youth Fund line in donations on ShulCloud and help us close the gap. Any amount will be appreciated.



Beth-El Film Series



Just For Us

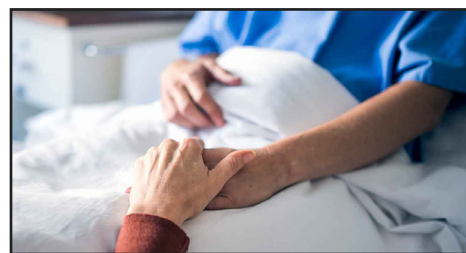
Rated TV-MA
1h 24m
Saturday, April 5
6 p.m.
Free.

In summer 2023, standup comedian Alex Edelman debuted a one-man show about his effort to combat anti-Semitism by covertly visiting a meeting of White Nationalists in Queens. Hilarious and insightful, this presentation is best viewed with a group of your fellow Beth-El friends.

Dinner provided

Please RSVP to the Temple for an accurate food count.

Healing Prayers and Visits



If you know someone at home or in the hospital who could use a visit from the Rabbi or another Temple member, or if you have the name of an ill family member or friend that you would like to be read at our Shabbat services, call the Temple office or go directly to our website: **Community, Mi Shebeirach/Prayer and Visit Request**.

Rabbi Zimmerman and Reneé Woods will get the information from this site quickly.

Thanks in advance for your help.



Shoshana Abrams Kaikov

Religious School

Education Director, Cantor Shoshana Abrams Kaikov

Something many people do not know about me is that I grew up in a Sephardic

Jewish home in Los Angeles, raised by parents who came from Buenos Aires, Argentina, and Havana, Cuba. My first language was Spanish, even before English — which I learned from *Sesame Street!* Our Latin-Jewish observance was uniquely flavored with all kinds of traditions, dialects, melodies, and delicacies.

Each year as I prepare our home for Passover, my heart and mind are flooded with beautiful memories from my childhood celebrations. It was always our tradition to be with my maternal grandparents for both seders each year, and it was a big Sephardic to-do. We would gather with aunts, uncles, and cousins and the incredible aroma would hit us as we entered my grandparents' home, greeted with Latin warmth — bear hugs, kisses, and the words "Happy Passover" in very heavy Cuban accents.

My Passovers were a bit different from

the standard Ashkenazi version of this festival of our freedom. My grandfather would conduct the entire seder for our family in Ladino (Judeo Spanish, a beautiful mix of Spanish and Hebrew). Many of the traditions were different from those we have at Beth-El.

I have memories of being asked to hold a cloth sack filled with matzah over my shoulder for much of the seder as a symbol of "carrying the burden of slavery." My shoulder was eventually covered in crumbs, and after about five minutes I definitely "got" the message. Charoset made of apples, cinnamon, and nuts? Not in our family. Our charoset was a deliciously thick, dark paste made of dried fruit, nuts, orange zest, and wine. Matzah kugel? Not in our family. We ate Matzah fritters (aka Bumuelos) dusted with sugar and cinnamon. Yum! Elaborate searches for the Afikomen? Believe it or not, my grandfather placed the Afikomen under the tablecloth in the same spot each year. His parents probably did the same. To this day, my twin sister and I laugh because we have no idea why.

As a child, I remember attending Ashkenazi mock seders at Religious School and wondering, "What is all this?"

I was a teenager when the film *My Big Fat Greek Wedding* became a big hit, and I remember identifying so strongly with the protagonist, Toula Portokalos (Nia Vardalos), who explains she is Greek and isn't like the "delicate blonde girls eating Wonder Bread sandwiches" at lunchtime.

And like Toula, I didn't realize until I became an adult how special our family traditions were and how much I wanted to pass them on to my children. One way I keep my grandparents' memory alive is by cooking their beloved recipes and telling their stories. My girls know it's not Passover until I have made matzah fritters.

As you begin preparing for Passover, I invite you to think about what makes your Passover celebrations so unique. What are you passing on L'dor Vador? I want to wish everyone a very Happy Passover! And I look forward to seeing many of you at the Beth-El Second Night Seder!

FWFTY Events

Friday, April 4

FWFTY's Lock-In at the Temple

Late night tacos, board elections, hide-and-seek, and more!

RSVP to Rabbi in advance: rabbiz@bethelfw.org

Want a position on the 2025-26 FWFTY board?

Contact Rabbi: rabbiz@bethelfw.org

Sunday, May 4

FWFTY Goes to Meow Wolf

Right after Religious School, we'll leave for a sensory explosion in Grapevine. You'll go room to room in search of clues and the answer to a strange and mysterious puzzle.

More information to come soon.

Beth-El Religious School Shabbat Friday, April 4

5:15 p.m. Family Shabbat Dinner

6:15 p.m. Student-led Shabbat Service · Join your amazing children as they lead us in a fun, festive, camp-style service.

7:15 p.m. Celebratory Oneg in honor of our Religious School students

Please sign up to bring your child's favorite dessert!

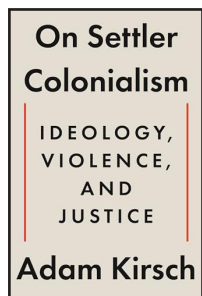
Contact Cantor Shoshana: shoshanakaikov@bethelfw.org

All students and families are kindly asked to wear Shabbat attire.

\$10 adults · \$5 kids under 12 · FREE for kids 3 and under · with a family max of \$20

Library Reviews

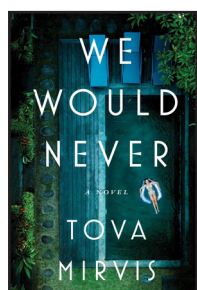
Margie Zentner



On Settler Colonialism by Adam Kirsch

is a non-fiction book that addresses the current crisis of anti-Semitism taking place not only on college campuses but worldwide.

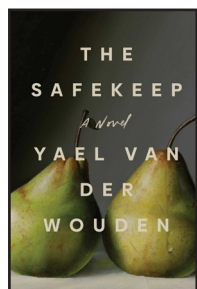
Kirsch shows how an ideology devoted to truth and justice can result in violence and injustice.



We Would Never by Tova Mirvis

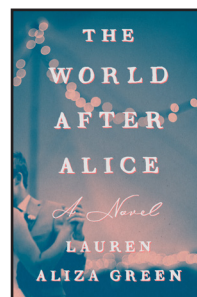
is a novel inspired by a true scandal. When a contentious divorce spirals into a nightmarish murder case, we see how an upper middle-class family becomes a tabloid

headline.



The Safekeep by Yael van der Wouden

is a powerful exploration of the legacy of World War II's lasting effect on a family in 1961 Netherlands. This multifaceted novel runs the gamut of sibling dynamics, the discovery of desire, and what it might mean to have been complicit in the war's horrors.



The World After Alice by Lauren Eliza Green

is a compassionately told story of grief, family dynamics, and the lasting effects of loss. The wedding of Benji and Morgan should be

a moment of joy but it is overshadowed by the absence of Alice, Benji's sister and Morgan's best friend, who tragically took her own life 12 years ago.



Laurie James

Women of Reform Judaism

WRJ President Laurie James

Thanks to Mimi Zimmerman and Semé Dewees-Cooper, we had

another thoughtful, thought-provoking Rosh Chodesh, led by Maxine Levy, welcoming Adar. *V'samachta b'chagecha* – "you should rejoice in your festivals," and we did, with our annual hamantaschen bake-in! Thanks to Marge Van Giesen for bringing the dough so that we were done hours earlier than we thought we might be, and Kim Factor, who created personalized nametags for all of us.

Jen Appleman, Denae Chance, Marty Rubinson (aka "Marty and the Shabbat girls"), Liz Cooper, Julia Gorfain, Maxine Levy, Elsa Rubin, Wendy Maier, Faye Slater, Jenny Solomon, Sonja Stein, and Paula Wainstein made more than 300 hamantaschen for Religious School and for our Purim Spiel. We'll be calling on our membership and friends again for our Second-Night Seder bake-ins (another one is coming April 6), and to help

the afternoon of April 13.

The WRJ Judaica Shop's annual Tax-Free Day will coincide with the Temple's Annual Fundraiser on April 27.

See Bake-in pictures on next page.



The three shofars! Maxine Levy (front), Kim Factor, and Semé Dewees-Cooper sound in the new moon with shofars from Kim's collection.

Men of Reform Judaism

MRJ President Eric Deutsch



Eric Deutsch

Please join us for our annual **Mickey Goldman Spaghetti Dinner**

on Sunday May 4. MRJ has selected **Michelle Hartman as our Person of the Year** to be honored at that dinner. We will also be honoring the winner(s) of the MRJ/WRJ Collegiate Scholarships. Please look for details concerning the Mickey Goldman Spaghetti Dinner in this bulletin and the Rabbi's weekly E blasts.

On **Friday, April 4**, we will be doing the catering for the Religious School Shabbat dinner. We will also be providing brunch for the Temple Fundraiser on **Sunday, April 27.**

If you have any questions about the MRJ, please contact me at eric.deutsch@haynesboone.com.



Michelle Hartman, Mickey Goldman Person of the Year

Contributions

Caring Congregation

In Memory of Sheila Rosenfield
· Marilyn & Larry McGee

Floral Fund

In Honor of the B'nai Mitzvah
of our daughter Lily and son Joe
· Hilary Ryder & Matthew Henken
In Memory of C.P. Snelgrove
· Susan and Russ Schultz
In Memory of
Charlotte & Mickey Goldman
· Carol and Richard Minker
In Memory of Trudi Post
· Luann Feld Family
In Memory of Virginia Westermann
· Yuyo Westermann

Library Fund

In Memory of Mrs. Francis Klotzman
· Laurin & Cheryl Baum
In Memory of Anne Feinberg
· Alan & Loretta Feinberg

Mitch Stenzler Scholarship Fund

In Memory of Geraldine "Jerry" Brown
· Steve Brown

Rabbi Zimmerman Discretionary Fund

In Honor of Rabbi Zimmerman
· Jack & Ladye Ann Miller
In Honor of Maxine Levy's meaningful
Rosh Chodesh service
· Laurie James
In Honor of Mimi Zimmerman for
restarting Rosh Chodesh
· Laurie James
In Honor of Karl Rosenblum's help
with WRJ
· Laurie James
In Memory of Ruthe C. Handleman
· Caren Handleman
In Memory of Sheila Rosenfield
· Joan and Sam Rosen
In Memory of Bennett Smith
· Donna Smith Rankin
In Memory of Sandra Luskey
· Steve Brown
In Memory of Aunt Bella Furst
· Alyse Nackson
In Memory of Maury Solomon
· Jenny Solomon

Religious School

In Honor of Semé Dewees-Cooper for
restarting Rosh Chodesh
· Laurie James
In Memory of Sheila Rosenfield
· Jeanie and Ken Huffman

Rosenthal-Siegel Education Endowment Fund

In Honor of the Endowment
· Steve Brown

Temple Fund

In Honor of Quattro Miller's
Bar Mitzvah
· Mr. & Mrs. Jack Rubin
· Judie & Bob Greenman
In Honor Michelle Hartman's
Mickey Goldman Award
· Meredith & Edwin Cohen
In Honor Edythe Cohen's 97th birthday
· Meredith & Edwin Cohen
In Honor of the oneg fund
· Cindy & Robert Simon
In Memory of Dore Goldstein, my
beloved father
· Julie and Red Goldstein
In Memory of Harry Maizlish
· Steve Maizlish
In Memory of Virginia Abrams
· Dick Abrams
In Memory of Marion Goodman
· Loesje Blumberg
In Memory of Scott Sherman
· Selma Sherman
In Memory of Melissa Sherman
· Selma Sherman
In Memory of Dore Goldstein
· Daniel & Julie Goldstein

Temple Fund (continued)

In Memory of Bella Furst
· Alyse Nackson
In Memory of Joseph Klein
· Steven & Fidelia Klein
In Memory of Sandra Luskey
· Marilyn & Larry McGee
In Memory of Max Prostok
· Jeff Prostok
In Memory of Evelyn Siegel
· Meredith & Edwin Cohen

WRJ - DeZavala

In Memory of Jerome Levy
· Sheryl Levy

Youth Fund

In Honor of the Youth Fund
· Cindy & Robert Simon
In Memory of
June and Howard Britton
· Linda and Jeff Hochster
For the GaGa Ball Pit in Memory of
Jennah Montroll
· Nicholas Montroll



Last month, WRJ members came together to bake dozens of hamantaschen for Religious School and Purim celebrations.



2025 Confirmation Class: *Congratulations!*



Brenna Danoski



Victor Dujan



Elizabeth Florsheim



Samuel Henken



Lauren Rekhelis



Ryan Shulman



Sloane Wessinger

Gift shop extended hours

Tax Free Day is Sunday, April 27, and the Beth-El Gift Shop will be open extended hours, **9 a.m.-1 p.m.** This is also the day of the Annual Fundraiser, so be sure to stop by the gift shop and see all the merchandise, including clearance items, plus all the Judaica you need for holidays, weddings, birthdays, bar and bat mitzvahs.

All profits go to supporting our kids in Religious School and summer campships.

Sunday, April 27
9 a.m.-1 p.m.
Shop local!

MRJ/WRJ Scholarship Winners

On behalf of the MRJ and WRJ, we are very pleased to announce the winners of the 2025 MRJ/WRJ Collegiate Scholarships. This year we are awarding scholarships to five students, each of whom has demonstrated leadership and involvement in the Beth-El community. The scholarship recipients are **Erin Beck-Johnson, Emily Florsheim, Isaac Isgur, Connor Maxon and Leo Simanek.**

The recipients will be honored at the Mickey Goldman Person of the Year Dinner on **Sunday, May 4.** Please join us to recognize these future leaders of our community.

— Eric Deutsch, MRJ President

— Laurie James, WRJ President

April - 2025 - 5785

Sunday	Monday	Tuesday	Wednesday	Thursday	Friday	Saturday
		1 10 am People of the Book 6:00pm Evening Minyan 7:30pm Curious About Conversion Class	2 9:30 am Archives Meeting 11 am Gift Shop Open 6:00pm Evening Minyan	3 6 pm Evening Minyan	4 5:15 pm Religious School Dinner 6:16 pm Student-led Shabbat Service FWFTY Sleepover	5 9 am Zoom Torah Study 6 pm Beth El Movie Night: "Just for Us"
6 9:30 am Religious School 9:30 am Gift Shop Open	7	8 12 pm Jewish Puzzle Of Life 6:00pm Evening Minyan	9 9:30 am Archives Meeting 11 am Gift Shop Open 6:00pm Evening Minyan	10 6 pm Evening Minyan	11 5:30 pm Shabbat welcome, 6:15 pm Kabbalat Shabbat Service	12 EREV PESACH 9 am Zoom Torah Study Seders at Home
13 PESACH No Religious School 5:30 pm Community Second-Night Seder	14 PESACH 7 pm Board Meeting	15 PESACH 6 pm Evening Minyan	16 PESACH 9:30 Archives Meeting 11 am Gift Shop open 6 pm Evening Minyan	17 PESACH 6 pm Evening Minyan	18 PESACH 5:30 pm Shabbat welcome 6:15 pm Kabbalat Shabbat Service	19 PESACH 9 am Zoom Torah Study 10:30 am Last Day Passover with Yizkor at Rabbi's House
20 9:30 am Religious School 9:30 am Gift Shop Open	21	22 12 pm Jewish Puzzle of Life 6 pm Evening Minyan 7:30 pm Curious About Conversion Class	23 9:30 Archives Meeting 11 am Gift Shop open 6 pm Evening Minyan 6:30 pm Community Yom HaShoah	24 12 pm PrimeTimers Event 6 pm Evening Minyan	25 5:30 pm Shabbat welcome 6:15 pm Kabbalat Shabbat Service	26 9 am Zoom Torah Study
27 Temple Torah March and Celebration 9:30 am Religious School 9:30 am Gift Shop Open	28 7:30pm Religious School Committee Zoom	29 6 pm Evening Minyan	30 9:30 am Archives Meeting 11 am Gift Shop open 6 pm Evening Minyan	May 1 6 pm Evening Minyan	2 5:30 pm Tot Shabbat 5:30 pm Shabbat welcome 6:15 pm Kabbalat Shabbat Service	3 9 am Zoom Torah Study 10:30 am Shabbat Morning Service and Bar Mitzvah of Campbell Schneider

For additional
information
and updates
about events,
please visit our
website at www.bethelfw.org
or see Rabbi's
e-blasts.

Thursday, April 24, at noon

Chag Passover Sameach, Primetimers! We have a phenomenal program for you this month. Please note the different date: **Thursday, April 24**. We will have a special performance by Carolyn Enger, a Steinway artist, playing her concert of "American Ethos," plus additional Jewish music in the Sanctuary at 12:30 p.m.

Lunch will be at noon in the Great Hall and will be catered by Lettuce Cook, or you can bring your own. For \$14 you get a side salad, brownie, and your choice of:

- Turkey sandwich with caramelized

onion, lettuce, avocado, and tomato

- Roast beef sandwich with caramelized onion, horseradish mayo, and au jus
- Salmon croquette sandwich with tomato, onion, lettuce, and creamy dill aioli
- Salad: Romaine with dried cranberries, onion, sunflower seeds, tomato, blue cheese, asiago, parmesan, pecans, and sweet vidalia vinaigrette

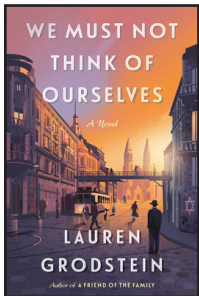
There will be some special treats for everyone as well, so save room. Please RSVP to Michelle Hartman by Sunday, April 20, at hartman8729@sbcglobal.net or 817-706-3451.



Kay Thibodeaux, owner of The Touring Chocolatier, discussed the entire process of making chocolate, from growing cacao pods to making chocolate treats at the March Primetimers' event.

People of the Book

Sheryl Levy



We Must Not Think of Ourselves
by Lauren Grodstein

Date TBA, 10 a.m.
Beth-El library

The Beth-El book group's selection for May (date TBA) is *We Must Not Think of Ourselves* by Lauren Grodstein. The book is based on the true story of Emanuel Ringelblum, a Polish historian who began a secret project in the Warsaw Ghetto named "Oneg Shabbat." Its mission was to record interviews with confined Jews, archive them, and preserve them for posterity.

Please contact Sheryl Levy (slevy2608@gmail.com) for more information or if you would like to be put on the contact list. We'd love to have you. The more people, the more ideas, the better the discussions.

Isadore Garsek Lodge Grant Awards

Attention all high school seniors:

Do you have an outstanding academic record? Here is your opportunity to apply for B'nai B'rith grants valued up to \$3,000 as determined by the grant committee.

The purpose of the program is to provide grants to children of members of the Isadore Garsek Lodge and/or of an established Jewish Congregation in Tarrant County. The parent or guardian must be a member in good standing for at least 12 months prior to submission of the application. Children of deceased

parents are also eligible if the parent died while a member for at least 12 consecutive months.

Do not delay! Deadline May 1

For Applications or more information contact **Rabbi Zimmerman** or: **Robert Chicotsky**, Isadore Garsek Grant Selection Committee
4508 Quail Hollow Court,
Fort Worth, 76133
817-832-3172 / rchicotsky@charter.net

Applications must be postmarked no later than May 1, 2025.



The Kindergarten and First grade Religious School classes had lunch at the home of Temple President Robert and Cindy Simon with Rabbi Zimmerman and Cantor Abrams-Kaikov.



WORLD ZIONIST CONGRESS ELECTION

VOTE REFORM | SLATE #3

Vote through May 4 | ZionistElection.org

The World Zionist Congress Elections

Rabbi Brian Zimmerman



Brian Zimmerman, Rabbi

When the State of Israel was created, Diaspora Jews were given a voice. Every five years elections would take place in which all Diaspora Jews would have a

chance to vote on a slate that represents them in Israel.

In Israel, church and state are not separate. Diaspora members of the World Zionist Congress allocate millions of dollars based on the number of members and their delegation. This means that for only a \$5 registration fee and five or 10 minutes of your time, you get a voice.

There are 23 groups running slates, from Ultra-Orthodox to Reform. These 152 American seats determine matters as essential as: How much money goes to which types of kindergarten class-

rooms, and what kind of funding goes to organizations that offer resources and security to Jews who are not Ultra-Orthodox.

They also advocate for a vision of Israel in which men and women, born Jews, and converts, have equal voices in the direction of the country.

Even if just 50 members of our congregation voted in this election between now and May 4, it would make an incredible difference for quality of life in Israel and a safe home for secular and Reform Jews.

Please reach out to Rabbi Zimmerman if you have questions and please encourage your friends in the congregation to vote. **Cast your vote before May 4.**



Finding Our Place in the Jewish Puzzle of Life:

Tuesdays

April 8 and 22, noon

Have you ever been asked why you are Jewish and found yourself groping for an answer? Has your son or daughter asked you why he or she has to have a bar or bat mitzvah and you found yourself speechless? This twice-monthly class led by Rabbi Zimmerman will study philosophers, bring in guest speakers, explore Jewish history and text to articulate a personal theology. Please consider joining us.



Last month's BEJY outing of bowling and Ol'South. Go Team BEJY!



Junior Maccabees "Moms Night In." Many thanks to Brittany Walker for hosting this fun evening! Pictured left to right: Maia Hyary, Leslie Dias, Ashley Halevi, Gabi Seals, Brittany Walker.

April 4

Lynne Abrams
Bernard Appel
Mildred Belford
Louis Benno
Helen Bodzy
Deborah Bressert
Bernie Carb Bronstein
Carrie Brown
Bessie Coopersmith
David Cott
Beth Eisenman
Bennie Ellman
Sarah Cohn Frankel
Buddy Freed
Jack Gachman
Eleanor Gachman
Abe A. Gilbert
Sara Betty Gilbert
Stanley Goodside
Ruthe C. Handleman
Vickie Hicks
Frances Klotzman
Molly Koptowsky
Gertrude Kaplan Lander
Ralph Joseph Lawrence
David Lesnick
Sonya Luskey
Harry Maizlish
Harold Gershon Mann
Charlotte Mehl
Sadie Yonack Miller
Alvin H. Morewitz
Martin Aaron Rodman
Sarah Rosenthal
Charles Sacks
Marilyn Selig
Martin Siegel
Tillie Silverman
Adolph Smulian
C.P. Snelgrove
Eileen Taylor
Joseph Walderman
Mary Weinberg
Sam Weiner

April 11

Bess Kuperman Baum
James Brown
Ida Fred Cohn
Sarah Eckber
Bernice Etcoff
Alan Charles Finkelstein
Ruby Friedman
Sophie Gardner
Frank Gilden
Beatrice Grossfeld Durst
Nellie Hall
Arvin Kreitman
Abraham Kreitman
Estelle Max
Anna Micklin
Sophia Miller
Harriette Newman
Simon Oderberg
Ethel Paul
Leonard Polasky
Ralph Robinowitz
Raymond Roper
Beverly Rosenfield
Erma Rosenthal
Edward Rubenstein
Rebecca Schiff
Rebecca Schoenfeld
Leo Schwarz
Libby Serber
Marcia Haas Sherman
Beatrice Sloane
Jack Steinharter
Isaac (Izzy) David Stenzler
Sophie Urban

April 18

Sylvia Abrams
Charles Bock
Berta Braun
Vera Braun
Selma Endel Brin
Charlie Ezekel Coopersmith
Rose Cott
Dorothy Dobrow
Jayne Eisen

Sheila Feinknopf
Gus Flax
Isadore Fred
Karen Freedman
Sarah Roddy Goldberg
Hyman Jacob Goldstein
Walter Isaac Hochberg
Fanny Katz
Gertrude Kreitman
Gussie Kunen
Morton A. Lewis
Clarence Edwin Mayer
Elwood Minker
Mitzi Ogus
Fred A. Paul
Cpt. Alfred Gerald Platt
Sanford Reitman
Henry Rice
Ruth Lois Rice Telschow
Ruby Richards
Catherine Ritz
Harry Rubinson
Bettye Schoenfeld Baccus
Akiva Schreiber
Jack Siegel
Jennie Silverman
Herman Solomon
Lynn Taurog
Andries Voet
Mervin Eugene Weil
Janette Zevin

April 25

Hannah Antweil
Myer Bronstein
Baby Brown
Chester Catler
Duval Cocchi
Maurice Cohn
Fannie Duchin
Mayer Ellman
Saul Freundlich
Ike Friedman
Hubert Gibson
Adele Goldhamer
Sylvia Gould

Guillermo Guzman
Jennie Haas
Dora Eckert Herman
Milton L. Korman
Sol K. Lesser
Livia Levine
Charles Miron
Florence Newman
Stanley Newman
Lindy (Louis) Paul
Blanche Pikkell
Betty Gordon Rosen
Millie Rosenstein
Lillian H. Sankary
Stanley Schwartz
Esther Selig
Marvin Cerf Shwartz
Max Starr
Laura Stein
Lynn Sussman
Annette Taylor
Sam Thal
Henry Weil
Louis Weltman
DOuglas Whatley

May 2

Cohen H. Baker
Ruth Berkowitz
David Bilsky
Mina Bloch
Sandra Tuchin Bloom
Bernard Bodner
Linda Rae Bomash
Shelly Bovin
Harriett Bressert
Sidney Bushner
Adolph Cohen
Robert Cott
Burton Davis
John Factor
Nathan Frankel
Morris B. Freed
Sidney Fried
Lola Gestring
Nathan Ginsburg

Charlotte Goldman
Dena Gressman
John Hannon
Mary Hendelman
Idella Herbert
Betty Herman
Hannah Klein
Dennis Kocinski
Elaine Leiken Francis
Manfred Rothchild Levy
Rose Eileen Litwin
Bennie Luskey
Lester M. Maskell
Lisa Micklin
Estelle Avery Mirkin
Gershon Miron
Casimira Nieve
Edward Osser
Mildred Pearlman
Odessa Friedman Plost
Sam Rosenthal
Mimi Ross
Theodore Saferin
Lester Schneiweiss
Pearl Schwartz
William Schwartz
John Stein
Duncan Thomas Ware
James Weltman
Bettye Weltman
Sophia Williams
Victor S. Young
Jerold Zieselmann

Songs! Stories! Maror! Make your reservation today for the Second Night Seder!

• Prices below include the "past March 30 deadline" fee •

Beth-El/WRJ members attending

Adults (ages 13 and up): _____ x \$46 = \$ _____

Children (ages 3-12): _____ x \$22 = \$ _____

Non-members attending (additional \$4 per person)

Adults (ages 13 and up): _____ x \$50 = \$ _____

Children (ages 3-12): _____ x \$25 = \$ _____

Additional contribution
to help defray Seder expenses \$ _____

Total \$ _____

☐ Enclosed is a check made out to
"WRJ" for the above **total**

Please charge **total** to my

☐ Mastercard ☐ Visa ☐ Discover ☐ Amex

Card #: _____

CVV: _____ Exp.Date: _____

Cardholder name: _____

Billing address: _____

Phone: _____

No charge for children under 3, but high-chair must be reserved. **Number of high-chairs needed:** _____

Detach and return this form to: Beth-El WRJ Second Night Seder, 4900 Briarhaven Road, Fort Worth, 76109
or **reserve online** at **bethelfw.org**

Second-Night Seder

Sunday, April 13, 5:30 p.m.



Send the form below with payment to
"WRJ"

to: **Beth-El WRJ Second Night Seder,**
4900 Briarhaven Road,
Fort Worth, 76109

or reserve online at **bethelfw.org**

*"Let all who are hungry, come and eat.
Let all who are in need, come and share the Passover meal."*

— Haggadah

Due to increasing food and labor costs, we now need to increase the price of attendance.
We want everyone to feel welcome. If you would like to attend, but price is a concern, please contact Rabbi Zimmerman.



Beth-El Congregation
4900 Briarhaven Road
Fort Worth, TX 76109

Our mission: To meet the spiritual, educational, social, and religious needs of its members through the teachings and practices of Reform Judaism and to connect members to their Jewish identity and community.

NON PROFIT ORG.
U.S. POSTAGE
PAID
FORT WORTH, TX
PERMIT 1617

ADDRESS SERVICE REQUESTED

Beth-El Congregation
4900 Briarhaven Road
Fort Worth, Texas 76109
www.bethelfw.org
817-332-7141 phone
fax 817-332-7157

Rabbi, Brian Zimmerman: rabbiz@bethelfw.org

Rabbi Emeritus, Ralph Mecklenburger:
rabbi@bethelfw.org

Executive Director, Renée Woods:
director@bethelfw.org

Education Director, Cantor Shoshana Abrams Kaikov:
shoshanakaikov@bethelfw.org

Music Director, John Sauvey: jesbaritone@gmail.com

Building Manager, Jaime Rivera: cust@bethelfw.org
Bulletin Editor, Rick Press: rickbpress@gmail.com

Beth-El Board of Directors:

Robert Simon, President

Michael Appleman, President-Elect

Eve Shulman, 1st Vice President

Shayna Coyne, 2nd Vice President

Semé Cooper, Secretary

Sheldon Levy, Treasurer

Directors: Yolanda Becker, Erica Bekerman, Kim Factor,

Kimberly Florsheim, Angie Friedman, Red Goldstein,

Matthew Henken, Eric Lawrence, Karl Rosenblum,

Ben Rosenthal, Nancy Schwartz, Marc Slotter

WRJ: Laurie James, President

MRJ: Eric Deutsch, President

FWFTY: Connor Maxon, Co-President

Erin Beck-Johnson, Co-President

Contributions

• Make your contribution online at **bethelfw.org** or fill out the form below and mail it with your check to Beth-El Congregation

• **Undesignated donations** will be placed in the Temple Fund.

\$18-minimum contribution: Temple Fund, Religious School Fund, Youth Fund, Library Fund, Music Fund, Mitch Stenzler Scholarship Fund, Rabbi Zimmerman's Discretionary Fund, Rabbi Mecklenburger's Discretionary Fund, President's Discretionary Fund, Religious School Director's Discretionary Fund, Temple Archives, Caring Congregation

\$50-minimum contribution: Rosenthal-Siegel Education Endowment Fund, Operating Endowment Fund, Endowment #2

Other funds: **Tree \$20, Prayer Book \$30, Floral \$50, Tree of Life Leaf \$300**

Contribution Form

Enclosed please find the amount of \$ _____

Designated Fund: _____

☐ In Honor of: _____

☐ In Memory of: _____

Donor Name(s): _____

☐ Please send me

Address: _____

_____ (qty)

additional forms.

Phone: _____

Send acknowledgment to: _____

